

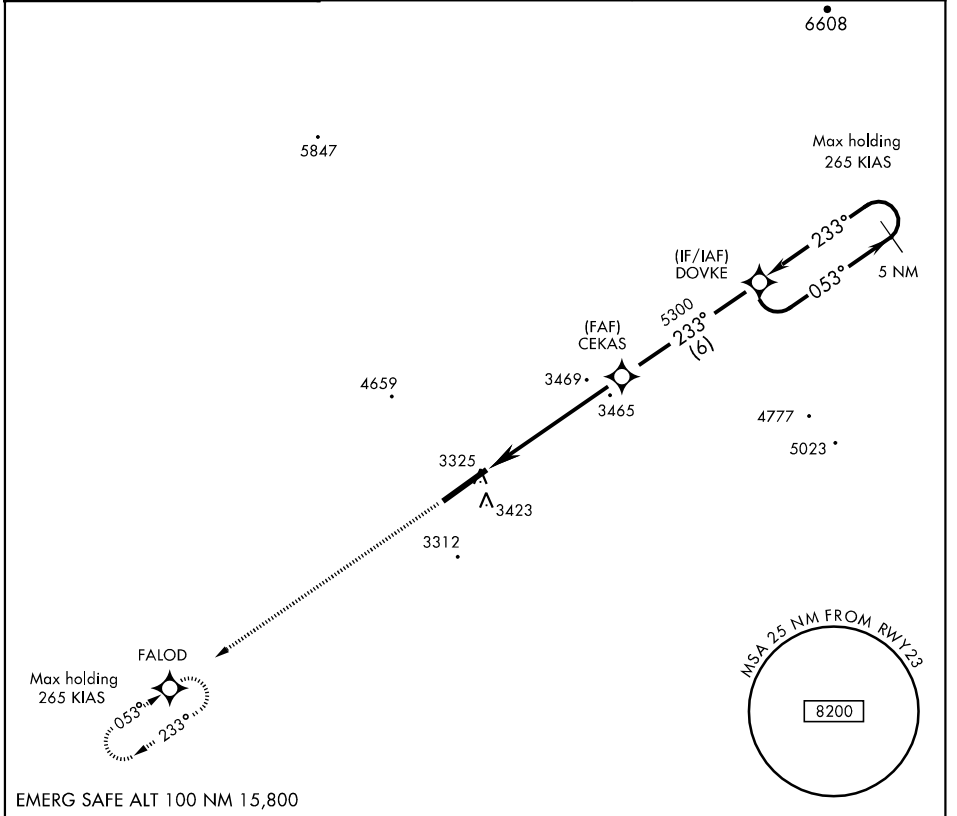
APCH CRS <b>233°</b>	Rwy Idg <b>8531</b>
	TDZE <b>3330</b>
	Arpt Elev <b>3337</b>

[USAF] AL-3085

KANDAHAR (OAKN)

▼ MISSED APPROACH: Climb to 6000 direct to FALOD and hold.

KANDAHAR TOWER <b>125.5 128.5 360.2</b>	KANDAHAR GCA <b>122.8 280.825</b>	ASR/PAR
--	--------------------------------------	---------



EMERG SAFE ALT 100 NM 15,800

