

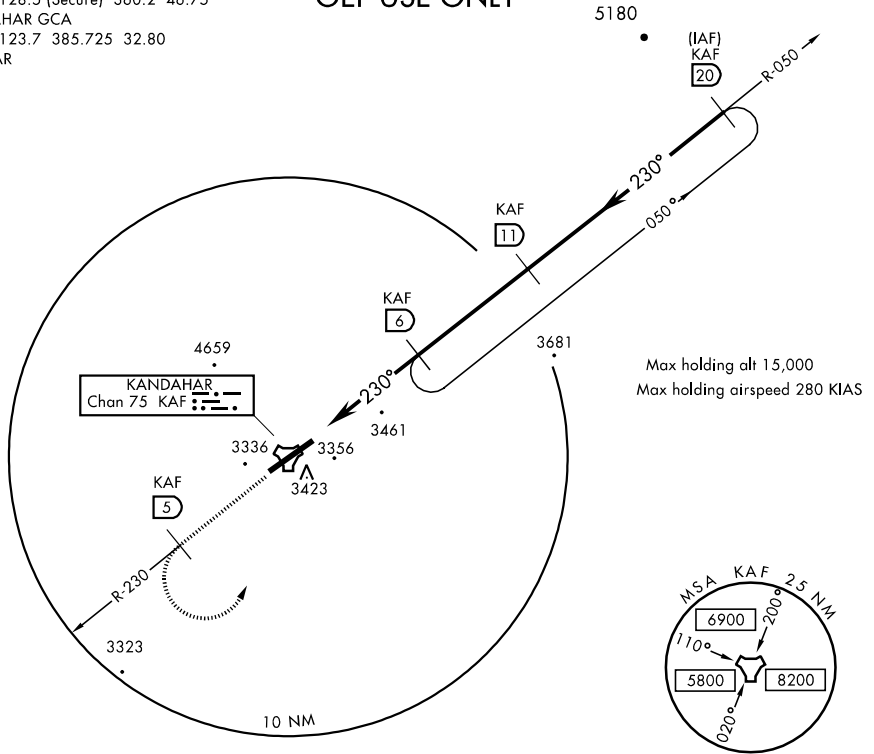
Orig HI-TACAN RWY 23

[USAF] JAL-3085

KANDAHAR (OAKN)
KANDAHAR, AFGHANISTAN

KANDAHAR TOWER
125.5 128.5 (Secure) 360.2 46.75
KANDAHAR GCA
120.8 123.7 385.725 32.80
ASR/PAR

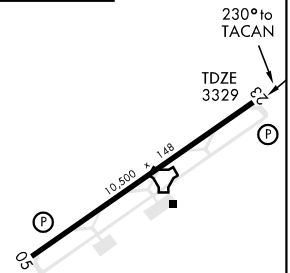
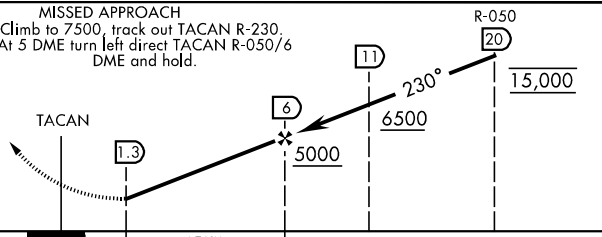
OEF USE ONLY



EMERG SAFE ALT 100 NM 15,600

MISSED APPROACH
Climb to 7500, track out TACAN R-230.
At 5 DME turn left direct TACAN R-050/6
DME and hold.

ELEV 3329



CATEGORY	A	B	C	D
S-23	3720-1600m	391	(400-1600m)	3720-2000m 391(400-2000m)
CIRCLING	3740-1600m 411(500-1600m)	3780-1600m 451(500-1600m)	3780-2400m 451(500-2400m)	3880-3200m 551(600-3200m)
S-PAR 23	3529-1200m		200	(200-1200m) GS 3.0°

▼ Climb runway heading to 5100 before turning NW.

LIRL 05-23
REIL 05-23

HI-TACAN RWY 23

31°30'N-65°51'E

KANDAHAR, AFGHANISTAN
KANDAHAR (OAKN)

PUBLISHED BY NIMA TO IACC SPECIFICATIONS

20 JUNE 2003 to 20 JUNE 2004