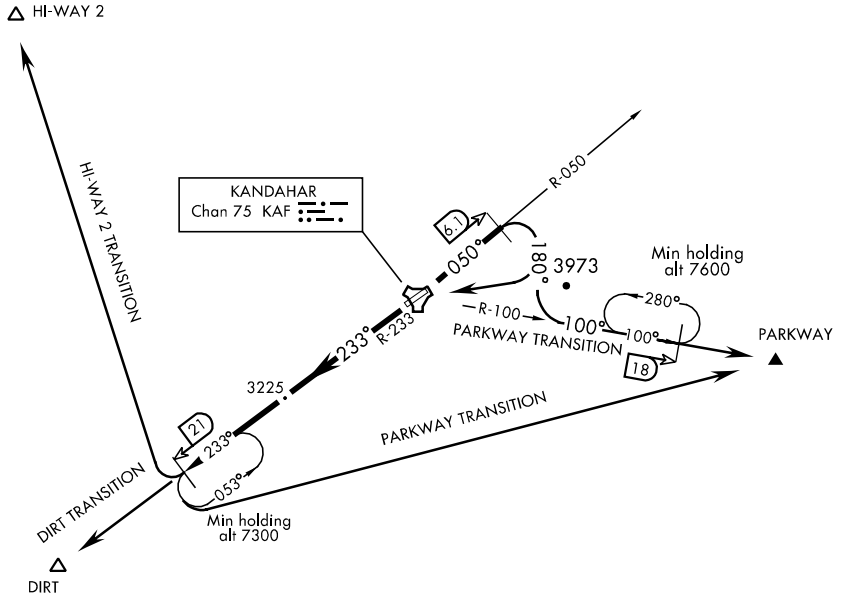


KANDAHAR TOWER
122.5 128.5 (Secure) 360.2 46.75
KANDAHAR GCA
120.8 123.7 385.725 32.8

OEF AIRCRAFT ONLY



DEPARTURE ROUTE DESCRIPTION

TAKE-OFF RWY 05: Climb to assigned altitude via the KAF R-050 to 6.1 DME, thence....

DIRT TRANSITION: turn right direct KAF TACAN then out the KAF R-233 to 21 DME (hold as directed by ATC), to DIRT.

HI-WAY 2 TRANSITION: turn right direct KAF TACAN then out the KAF R-233 to 21 DME (hold as directed by ATC) to HI-WAY 2.

PARKWAY TRANSITION: turn right track 180° intercept and track out KAF R-100 to 18 DME (hold as directed by ATC), then direct PARKWAY.

TAKE-OFF RWY 23: Climb to assigned altitude via the KAF R-233 to 21 DME, thence....

DIRT TRANSITION: at KAF R-233/21 DME (hold as directed by ATC), proceed direct DIRT.

HI-WAY 2 TRANSITION: at KAF R-233/21 DME (hold as directed by ATC), proceed direct HI-WAY 2.

PARKWAY TRANSITION: at KAF R-233/21 DME (hold as directed by ATC), turn left direct PARKWAY.