

Desert Scimitar

2002

What is Desert Scimitar?

- Desert Scimitar is the First Marine Division's command and control exercise that replicates real-world operations plans (OPLANS). It is a tactical exercise without troops (TEWT).

Why conduct training off base?

- Existing military training installations in the region do not possess the size or range of conditions needed to fully exercise/rehearse the First Marine Division's taskings in current OPLANS.
 - Climate, terrain, and hydrology in the proposed area is similar to Southwest Asia.
 - Area/space more representative of the distances and terrain we would encounter in battle.

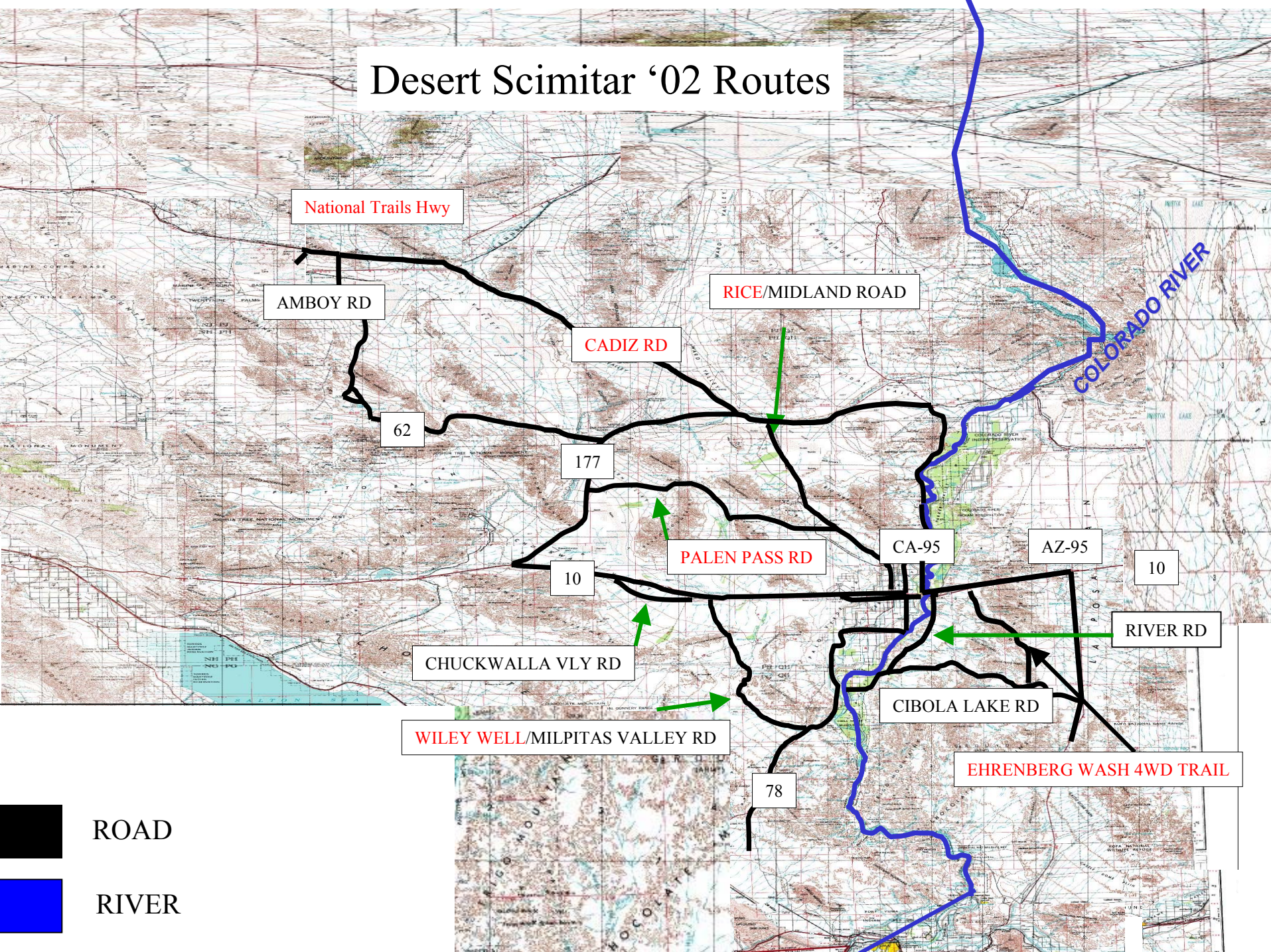
Why is Desert Scimitar important?

- Tests the division's ability to rapidly embark and deploy.
- Exercise command, control, and communications over moving forces separated by large distances
- Conduct a river crossing, to include all the tactical control measures and coordination required.
- Provide logistical support to a division's worth of equipment and personnel across extended distances
- Force commanders and planners to operate in unfamiliar terrain.

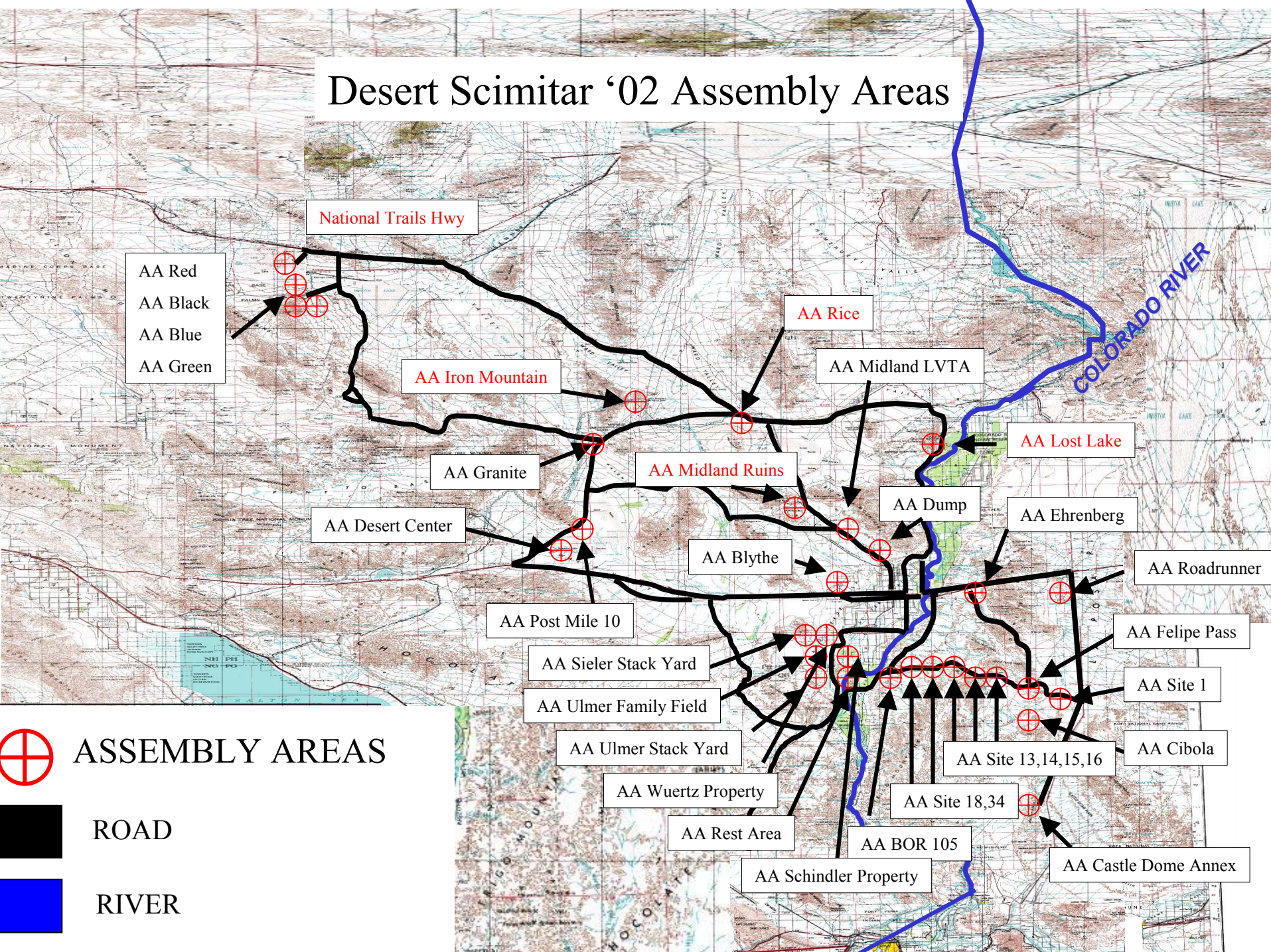
How large is Desert Scimitar?

- 592 vehicles
- 2,700 Marines
- 200 miles in length
- 450 feet of expeditionary bridging
- Units from:
 - Camp Pendleton
 - MCCAGC (29 Palms)
 - Hawaii
 - Pennsylvania (RES)
 - California (RES)

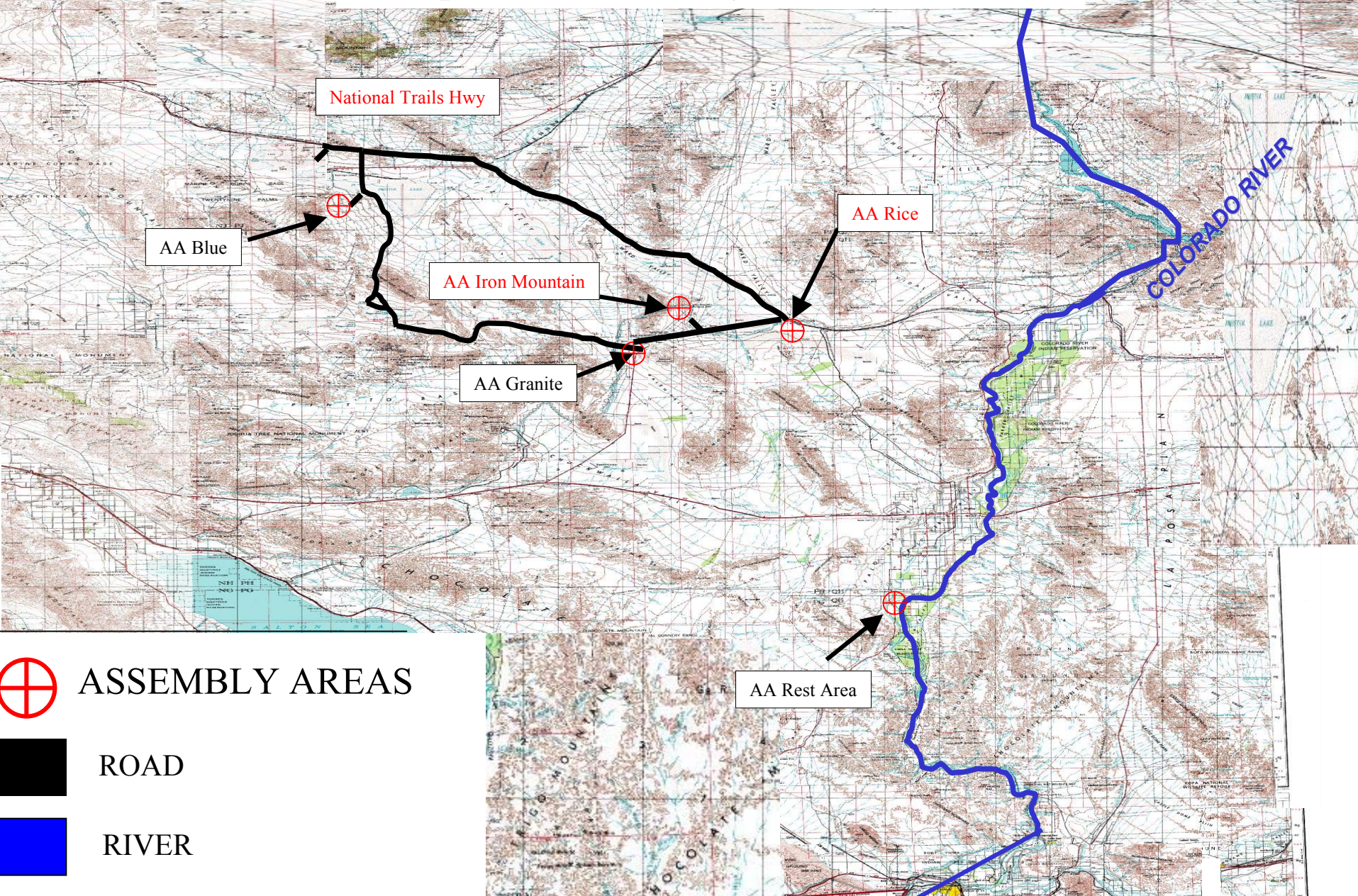
Desert Scimitar '02 Routes



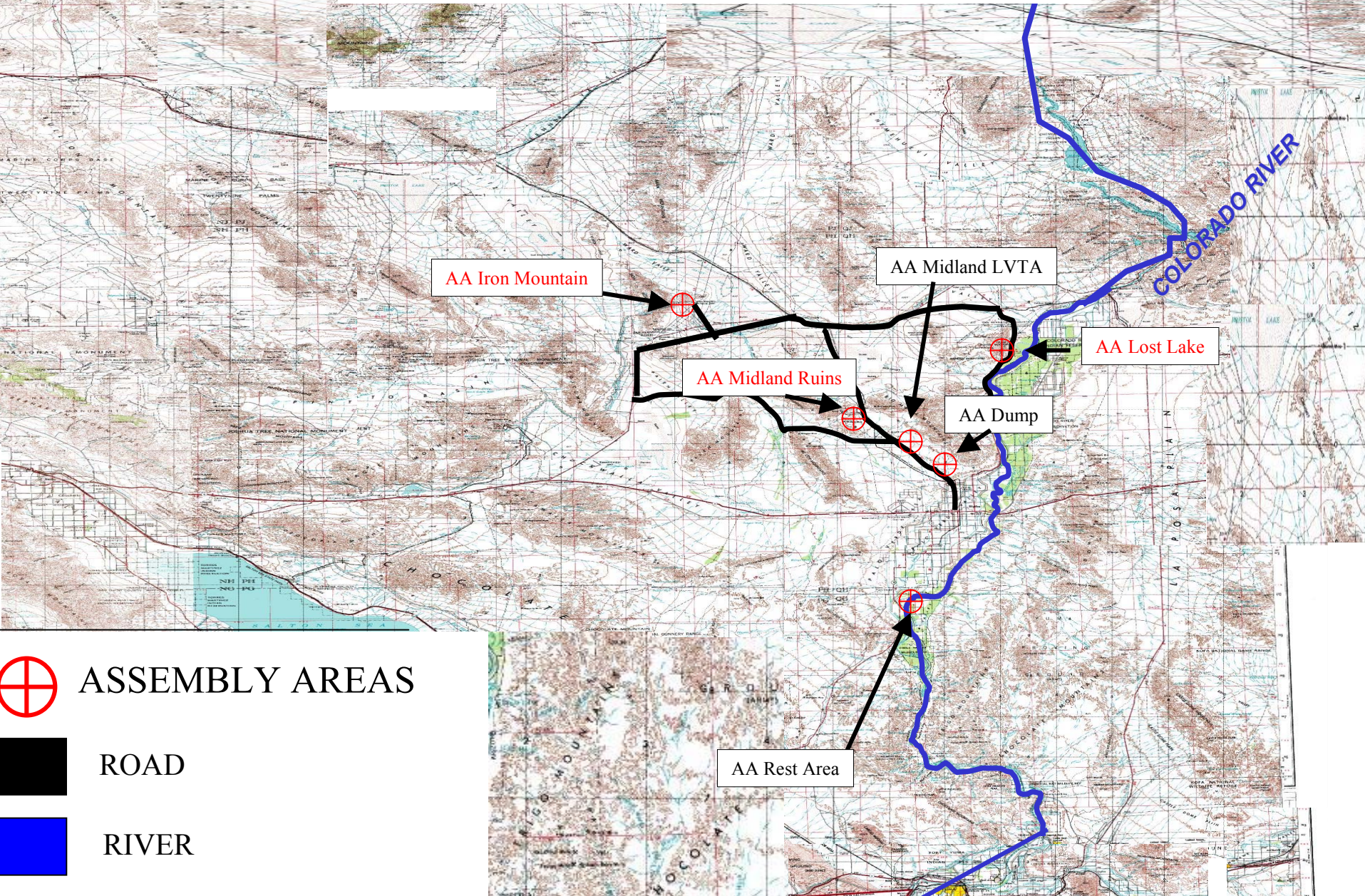
Desert Scimitar '02 Assembly Areas



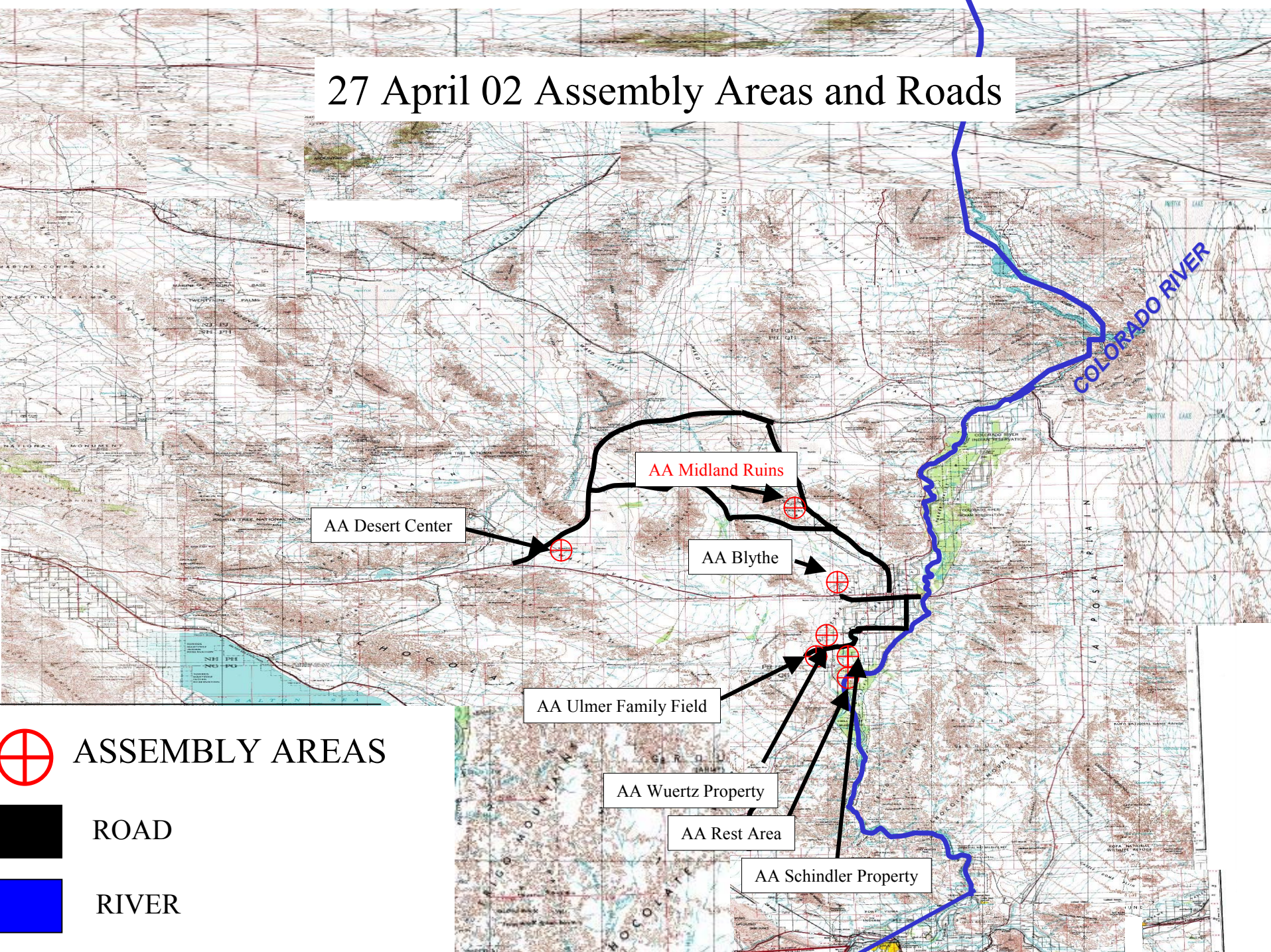
25 April 02 Assembly Areas and Roads



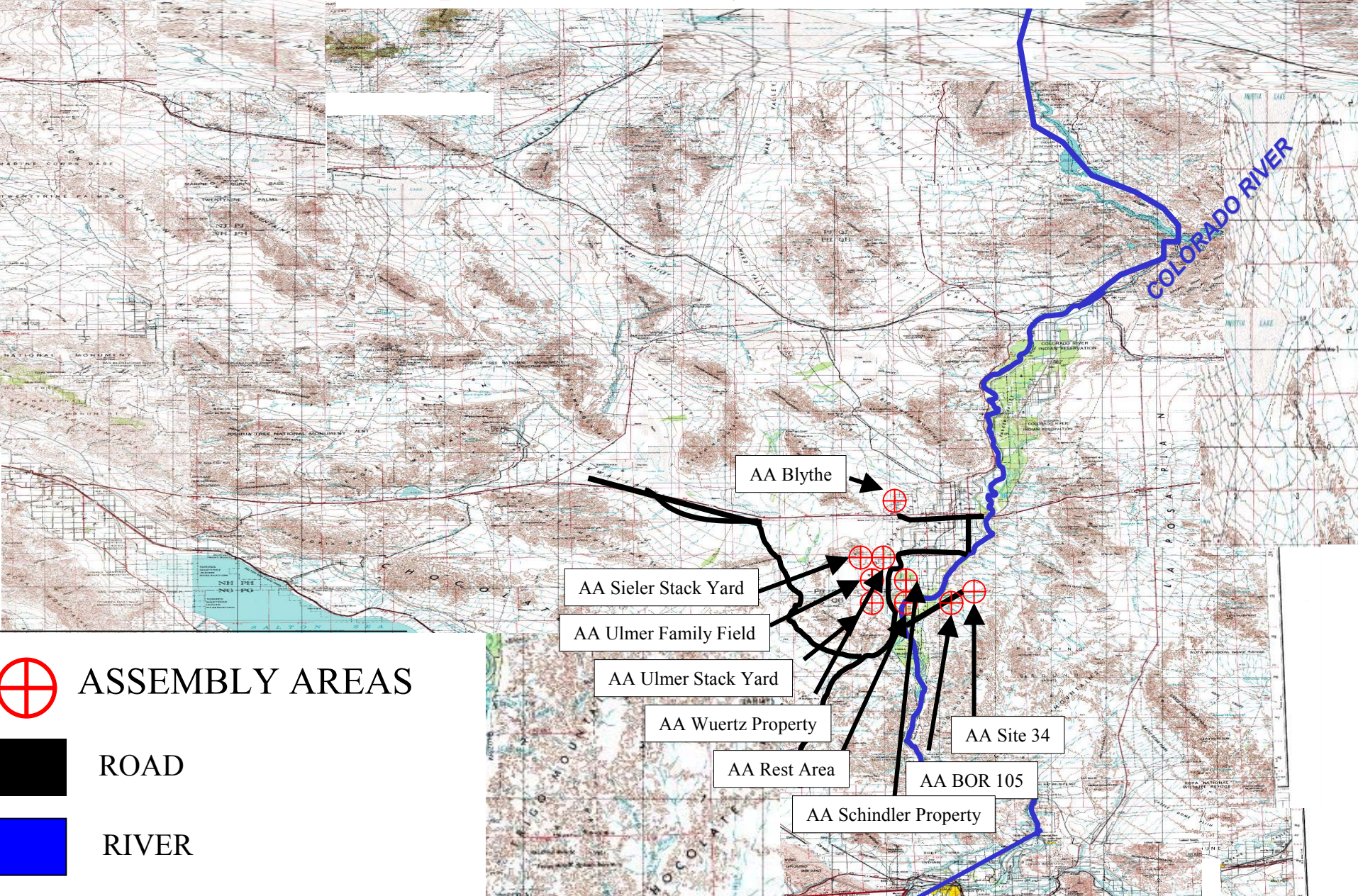
26 April 02 Assembly Areas and Roads



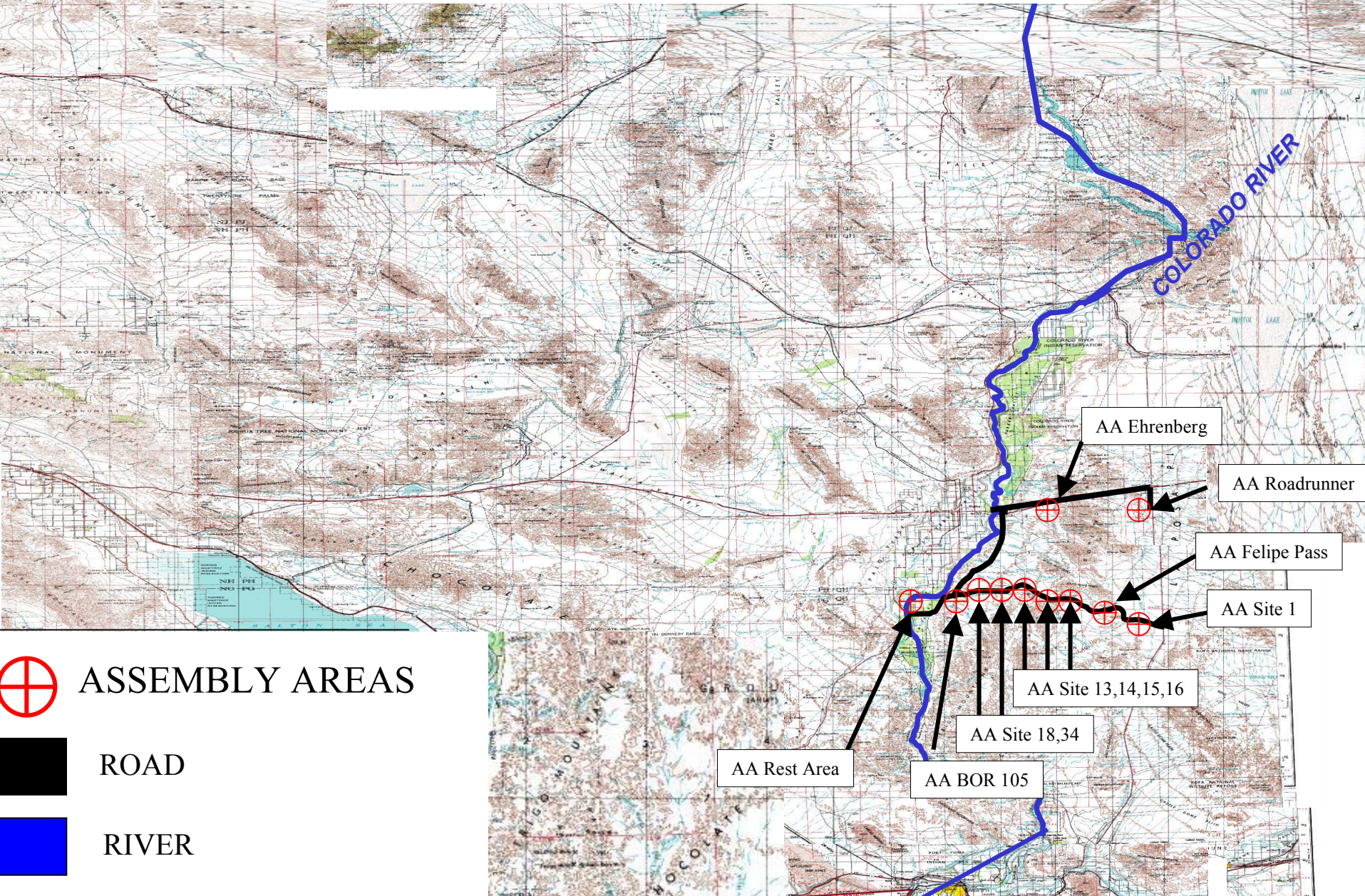
27 April 02 Assembly Areas and Roads



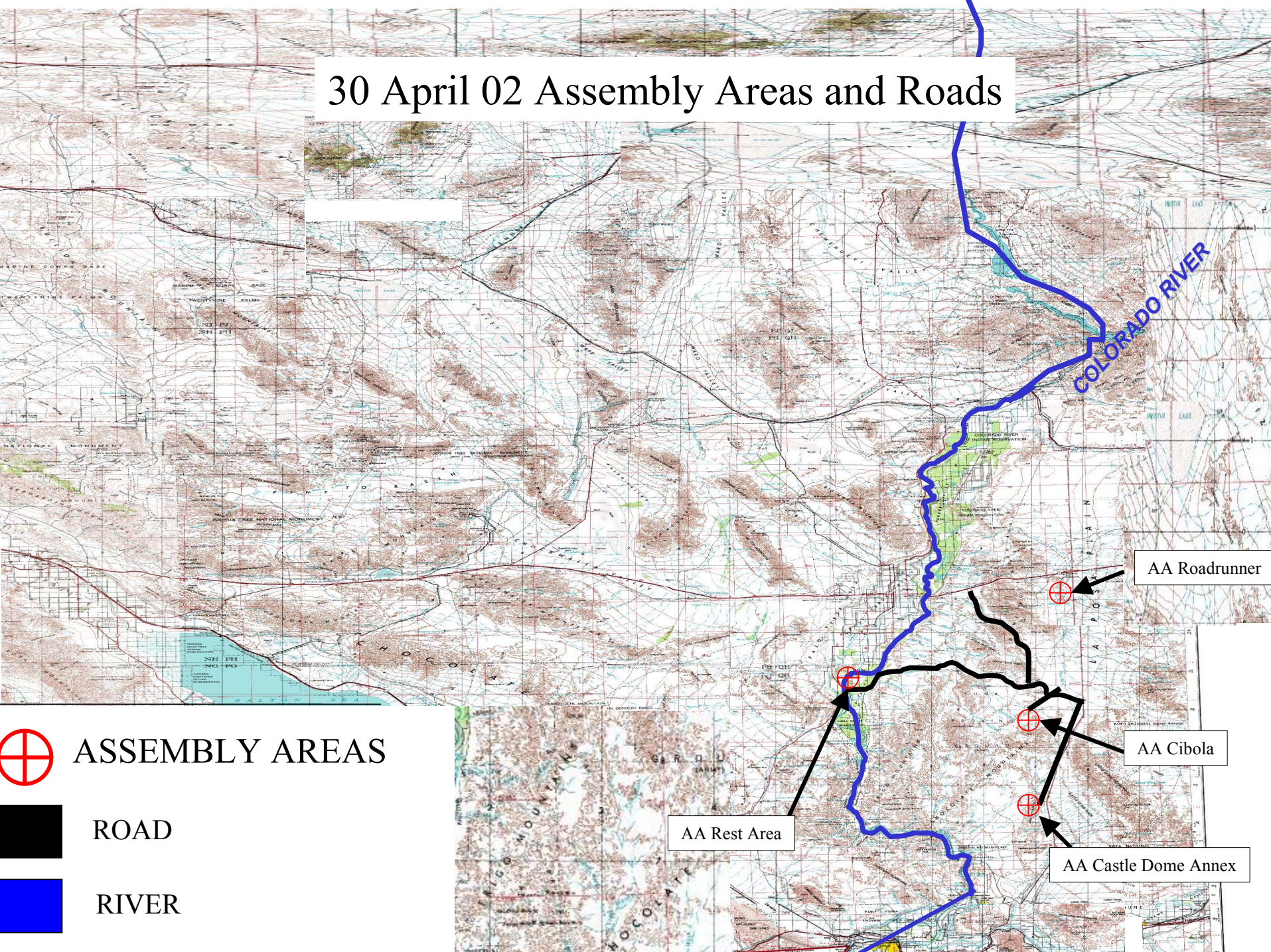
28 April 02 Assembly Areas and Roads



29 April 02 Assembly Areas and Roads



30 April 02 Assembly Areas and Roads



ASSEMBLY AREAS



ROAD



RIVER

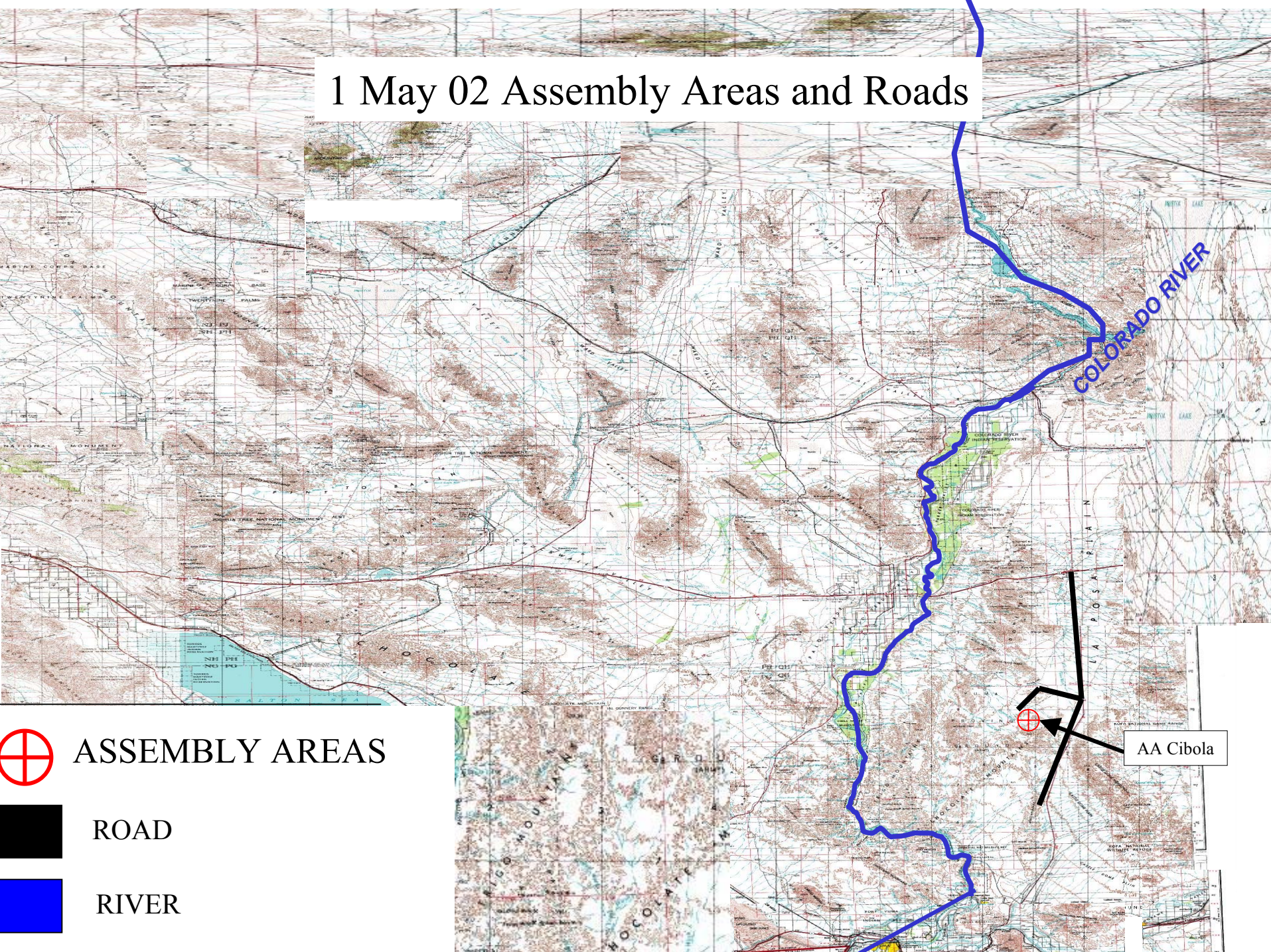
AA Roadrunner

AA Cibola

AA Rest Area

AA Castle Dome Annex

1 May 02 Assembly Areas and Roads



ASSEMBLY AREAS



ROAD

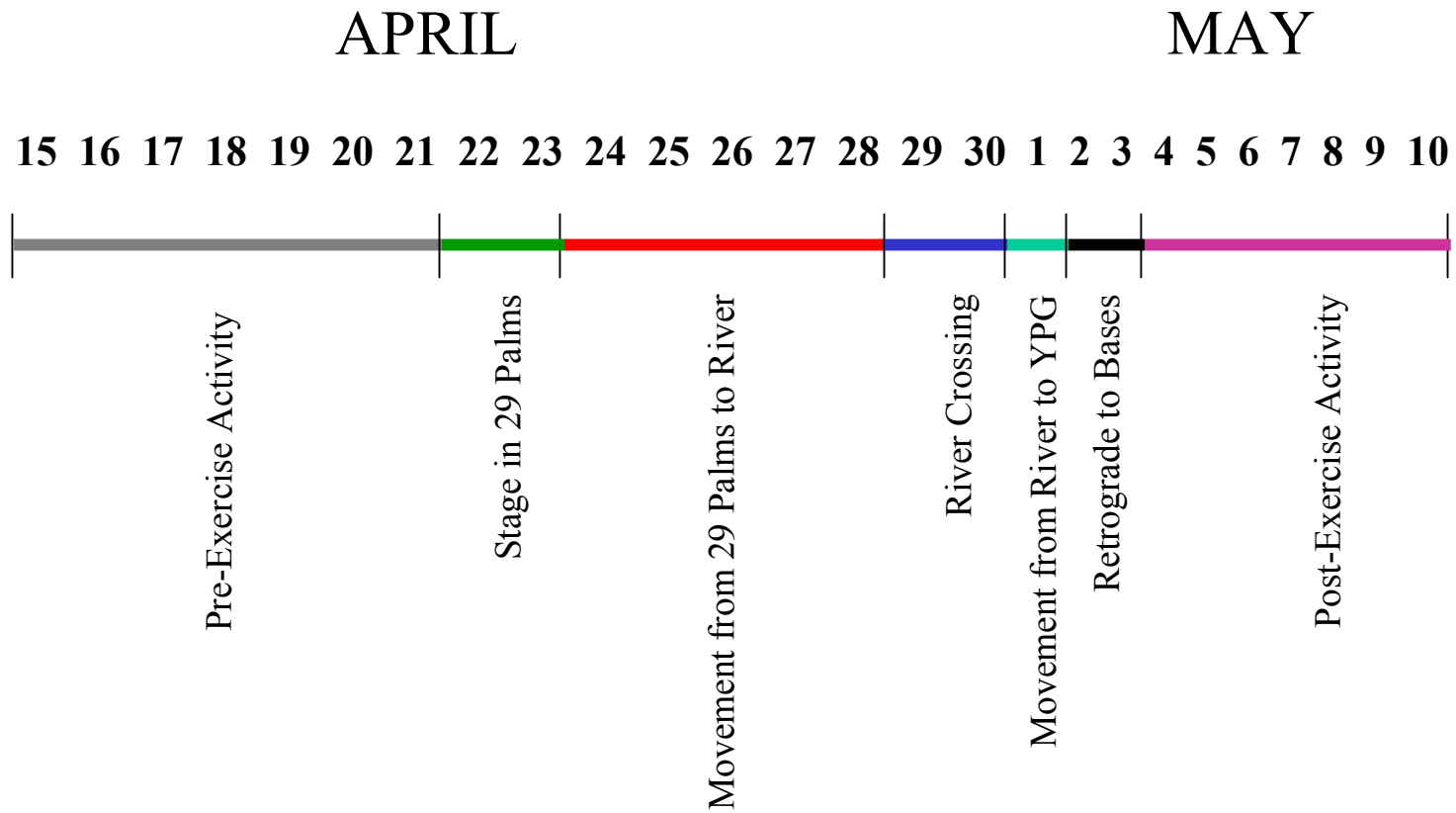


RIVER

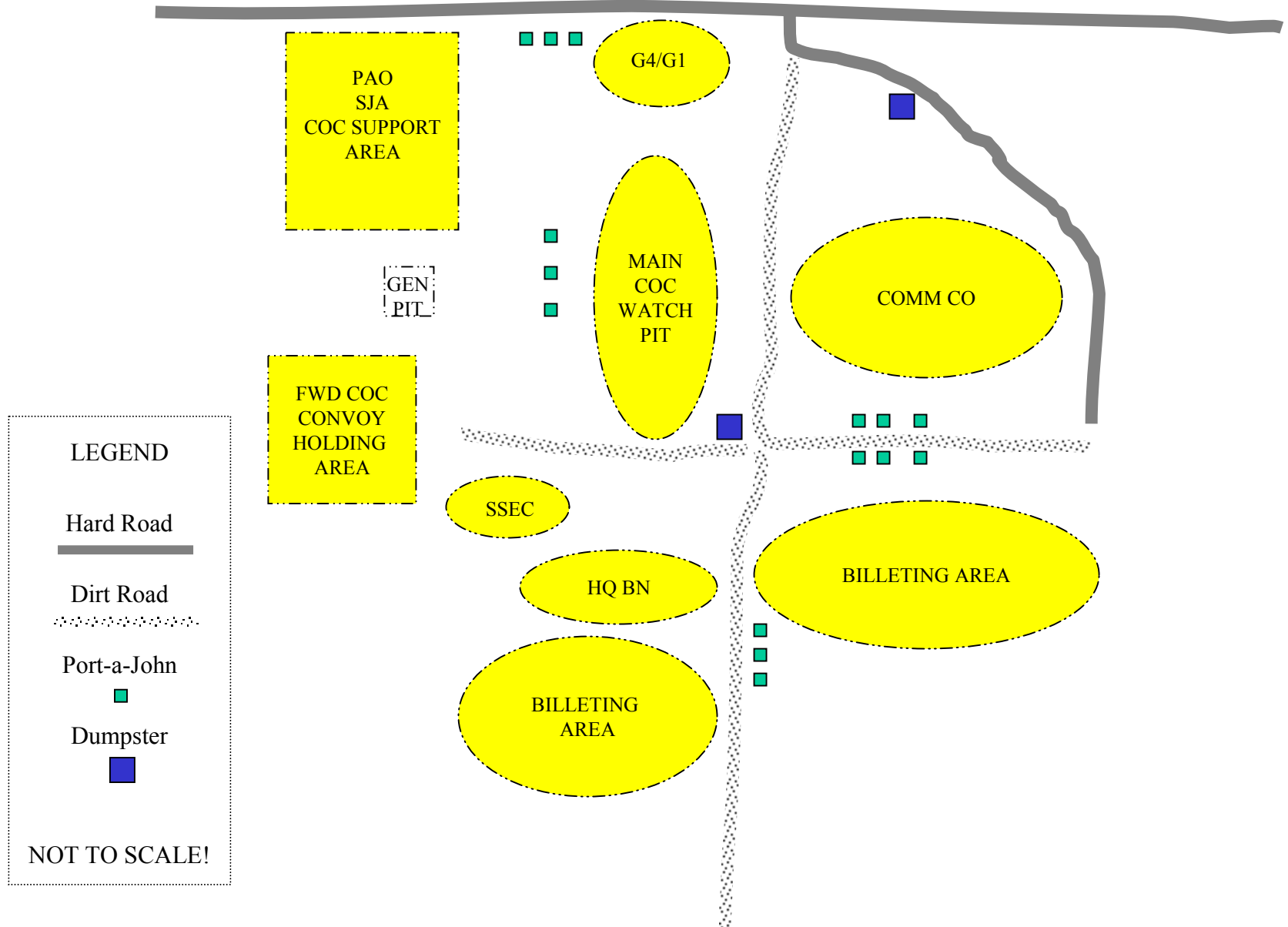
AA Cibola

Additional requested slides

Desert Scimitar '02 Timeline



Assembly Area Site Layout



OPERATIONAL AREAS

Desert Scimitar '02

Colorado River Crossing

