

FIGURE 1

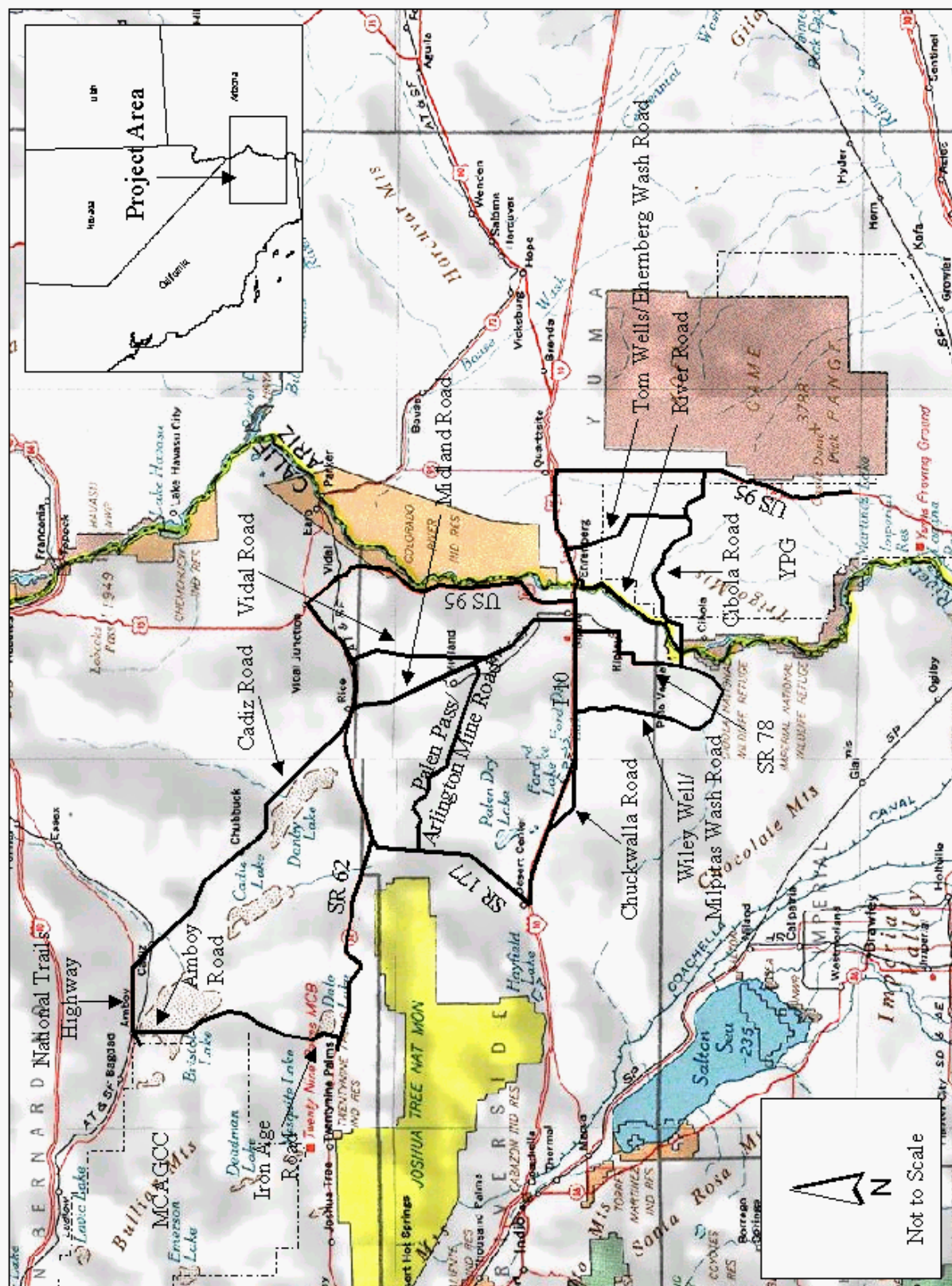
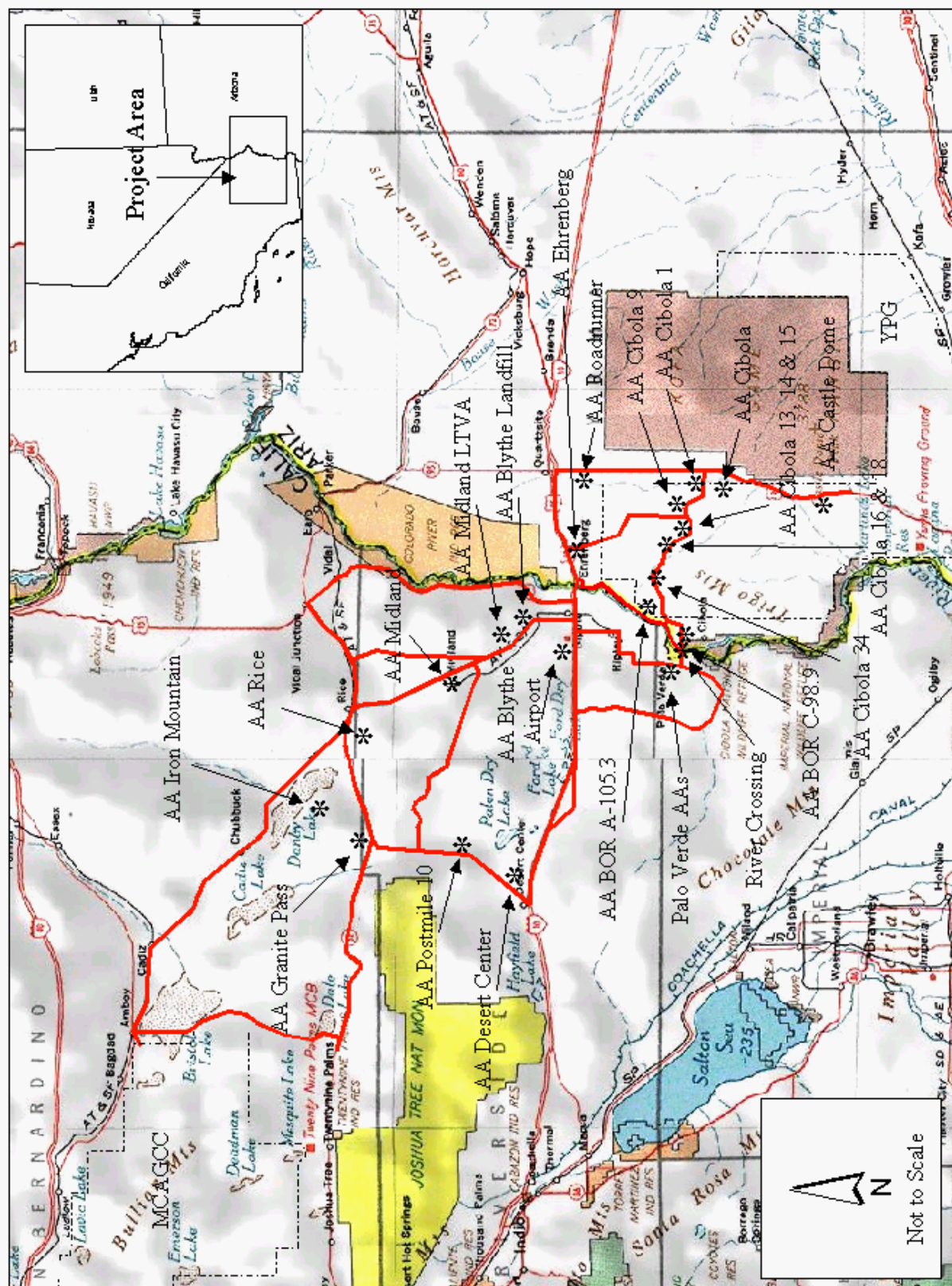


Figure 1. Desert Scimitar 02 Routes, California and Arizona.

FIGURE 2



**Figure 2. Desert Scimitar 02 Assembly Areas, California and Arizona.**



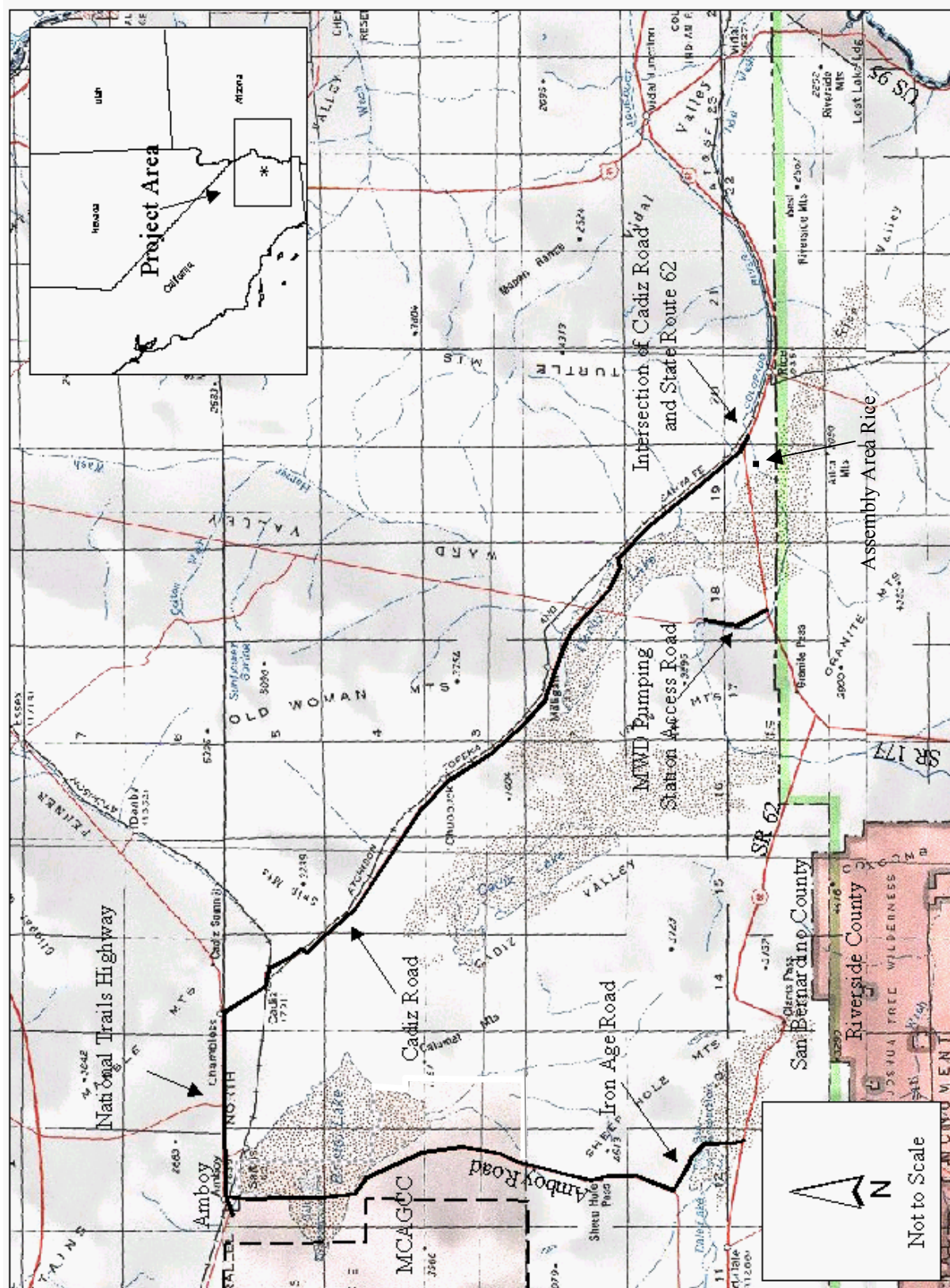


Figure 3. Cadiz Road, California.

The map is a topographic representation of a mountainous region. It features a grid system with red numbers (19, 20, 29, 30, 31, 33) and black numbers (10, 11, 12, 2, 5, 6, 7, 8, 9, 13, 14, 15, 16, 17, 18, 21, 22, 23, 24, 25, 26, 27, 28, 29, 30, 31, 32, 33, 34, 35, 36, 37, 38, 39, 40, 41, 42, 43, 44, 45, 46, 47, 48, 49, 50, 51, 52, 53, 54, 55, 56, 57, 58, 59, 60, 61, 62, 63, 64, 65, 66, 67, 68, 69, 70, 71, 72, 73, 74, 75, 76, 77, 78, 79, 80, 81, 82, 83, 84, 85, 86, 87, 88, 89, 90, 91, 92, 93, 94, 95, 96, 97, 98, 99, 100). The map includes labels for 'State Route 62' and 'State Route 47'. A specific area is highlighted with a black rectangle and labeled 'Assembly Area'. An inset map in the top right corner shows the 'Project Area' within the state of California, with arrows indicating its location relative to the state boundaries. A north arrow and a scale of 1:24,000 are provided in the bottom left corner. The map also shows various elevation points (e.g., BM 111 F 429.5, BM 112 393.4) and contour lines indicating the terrain's elevation.

---

*Desert Scimitar 02 Exercise*  
*Twentynine Palms, CA to Yuma, AZ*



---

*Desert Scimitar 02 Exercise*  
*Twentynine Palms, CA to Yuma, AZ*



FIGURE 6

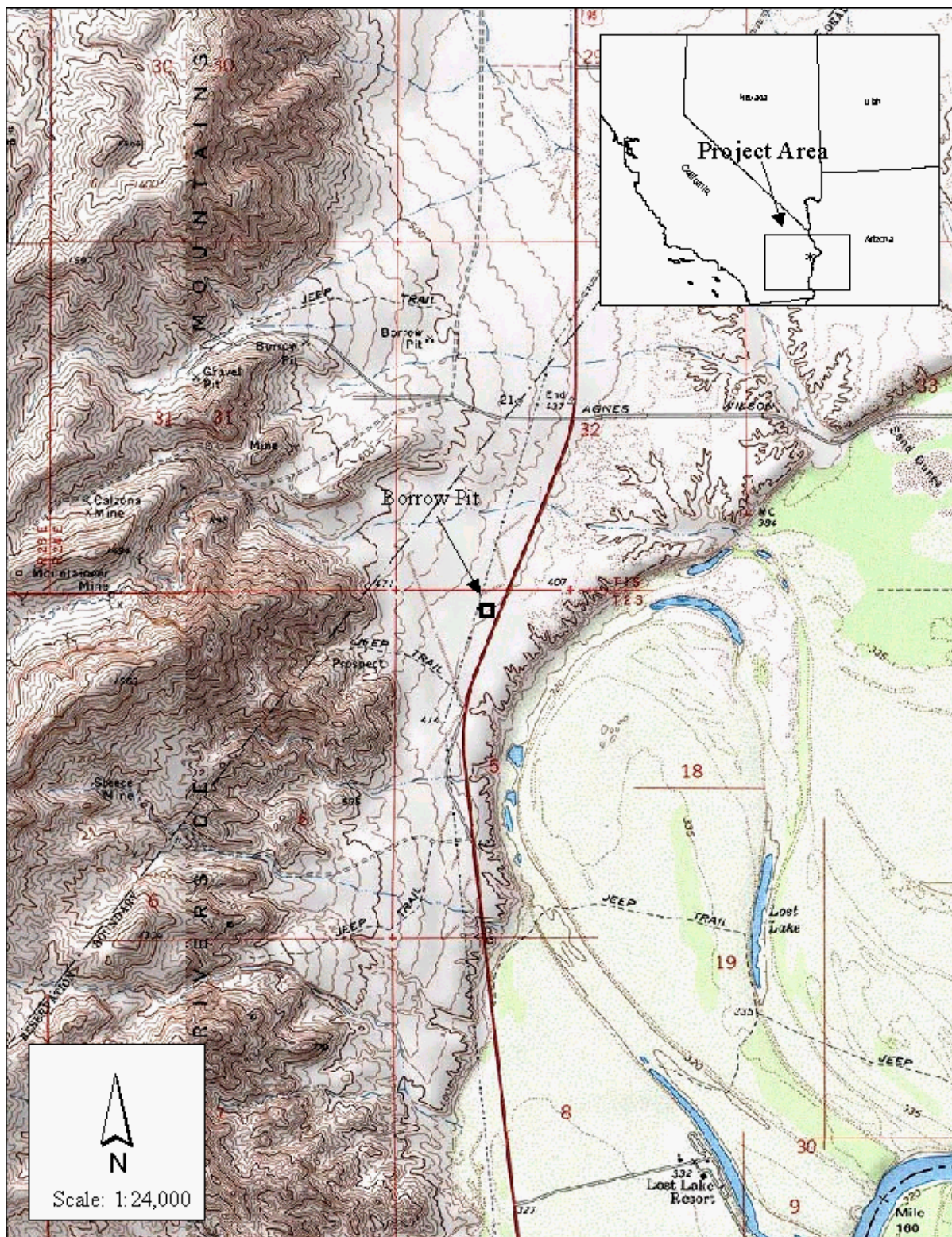


Figure 6. Borrow Pit, Colorado River Indian Tribes Reservation, California.



The map is a topographic representation of a mountainous region. It features brown contour lines indicating elevation, with labels such as 4000, 4200, 4400, 4600, 4800, 5000, 5200, 5400, 5600, 5800, 6000, 6200, 6400, 6600, 6800, 7000, 7200, 7400, 7600, 7800, 8000, 8200, 8400, 8600, 8800, 9000, 9200, 9400, 9600, 9800, 10000, 10200, 10400, 10600, 10800, 11000, 11200, 11400, 11600, 11800, 12000, 12200, 12400, 12600, 12800, 13000, 13200, 13400, 13600, 13800, 14000, 14200, 14400, 14600, 14800, 15000, 15200, 15400, 15600, 15800, 16000, 16200, 16400, 16600, 16800, 17000, 17200, 17400, 17600, 17800, 18000, 18200, 18400, 18600, 18800, 19000, 19200, 19400, 19600, 19800, 20000, 20200, 20400, 20600, 20800, 21000, 21200, 21400, 21600, 21800, 22000, 22200, 22400, 22600, 22800, 23000, 23200, 23400, 23600, 23800, 24000, 24200, 24400, 24600, 24800, 25000, 25200, 25400, 25600, 25800, 26000, 26200, 26400, 26600, 26800, 27000, 27200, 27400, 27600, 27800, 28000, 28200, 28400, 28600, 28800, 29000, 29200, 29400, 29600, 29800, 30000, 30200, 30400, 30600, 30800, 31000, 31200, 31400, 31600, 31800, 32000, 32200, 32400, 32600, 32800, 33000, 33200, 33400, 33600, 33800, 34000, 34200, 34400, 34600, 34800, 35000, 35200, 35400, 35600, 35800, 36000, 36200, 36400, 36600, 36800, 37000, 37200, 37400, 37600, 37800, 38000, 38200, 38400, 38600, 38800, 39000, 39200, 39400, 39600, 39800, 40000, 40200, 40400, 40600, 40800, 41000, 41200, 41400, 41600, 41800, 42000, 42200, 42400, 42600, 42800, 43000, 43200, 43400, 43600, 43800, 44000, 44200, 44400, 44600, 44800, 45000, 45200, 45400, 45600, 45800, 46000, 46200, 46400, 46600, 46800, 47000, 47200, 47400, 47600, 47800, 48000, 48200, 48400, 48600, 48800, 49000, 49200, 49400, 49600, 49800, 50000, 50200, 50400, 50600, 50800, 51000, 51200, 51400, 51600, 51800, 52000, 52200, 52400, 52600, 52800, 53000, 53200, 53400, 53600, 53800, 54000, 54200, 54400, 54600, 54800, 55000, 55200, 55400, 55600, 55800, 56000, 56200, 56400, 56600, 56800, 57000, 57200, 57400, 57600, 57800, 58000, 58200, 58400, 58600, 58800, 59000, 59200, 59400, 59600, 59800, 60000, 60200, 60400, 60600, 60800, 61000, 61200, 61400, 61600, 61800, 62000, 62200, 62400, 62600, 62800, 63000, 63200, 63400, 63600, 63800, 64000, 64200, 64400, 64600, 64800, 65000, 65200, 65400, 65600, 65800, 66000, 66200, 66400, 66600, 66800, 67000, 67200, 67400, 67600, 67800, 68000, 68200, 68400, 68600, 68800, 69000, 69200, 69400, 69600, 69800, 70000, 70200, 70400, 70600, 70800, 71000, 71200, 71400, 71600, 71800, 72000, 72200, 72400, 72600, 72800, 73000, 73200, 73400, 73600, 73800, 74000, 74200, 74400, 74600, 74800, 75000, 75200, 75400, 75600, 75800, 76000, 76200, 76400, 76600, 76800, 77000, 77200, 77400, 77600, 77800, 78000, 78200, 78400, 78600, 78800, 79000, 79200, 79400, 79600, 79800, 80000, 80200, 80400, 80600, 80800, 81000, 81200, 81400, 81600, 81800, 82000, 82200, 82400, 82600, 82800, 83000, 83200, 83400, 83600, 83800, 84000, 84200, 84400, 84600, 84800, 85000, 85200, 85400, 85600, 85800, 86000, 86200, 86400, 86600, 86800, 87000, 87200, 87400, 87600, 87800, 88000, 88200, 88400, 88600, 88800, 89000, 89200, 89400, 89600, 89800, 90000, 90200, 90400, 90600, 90800, 91000, 91200, 91400, 91600, 91800, 92000, 92200, 92400, 92600, 92800, 93000, 93200, 93400, 93600, 93800, 94000, 94200, 94400, 94600, 94800, 95000, 95200, 95400, 95600, 95800, 96000, 96200, 96400, 96600, 96800, 97000, 97200, 97400, 97600, 97800, 98000, 98200, 98400, 98600, 98800, 99000, 99200, 99400, 99600, 99800, 100000. The map also shows a network of roads, including State Route 177, and various landmarks such as the Assembly Area and the Dammit. A scale bar indicates a scale of 1:24,000. An inset map in the top right corner shows the location of the Project Area within the state of California.

---

*Desert Scimitar 02 Exercise*  
*Twentynine Palms, CA to Yuma, AZ*

FIGURE 8

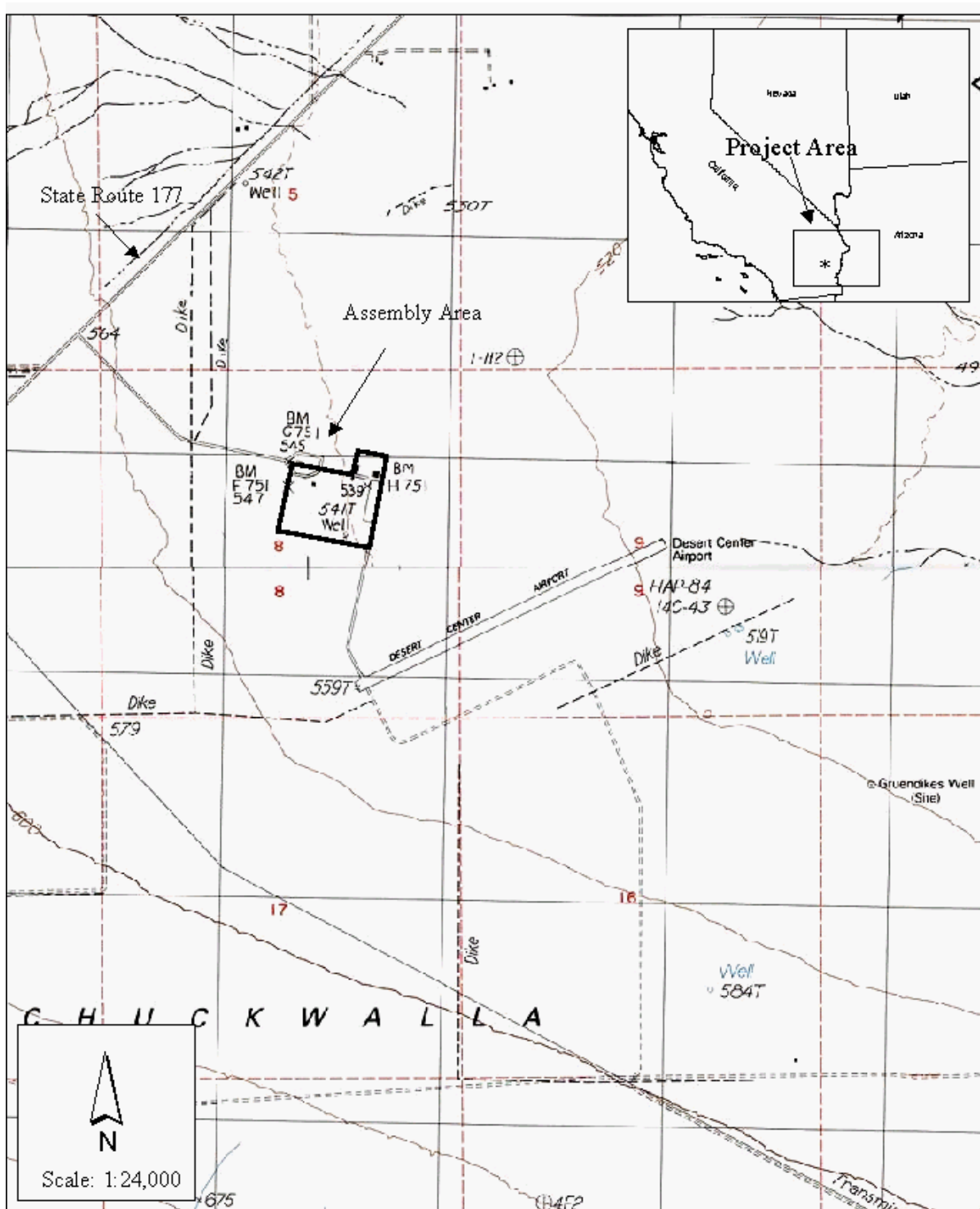


Figure 8. Desert Center Airport Assembly Area, California.



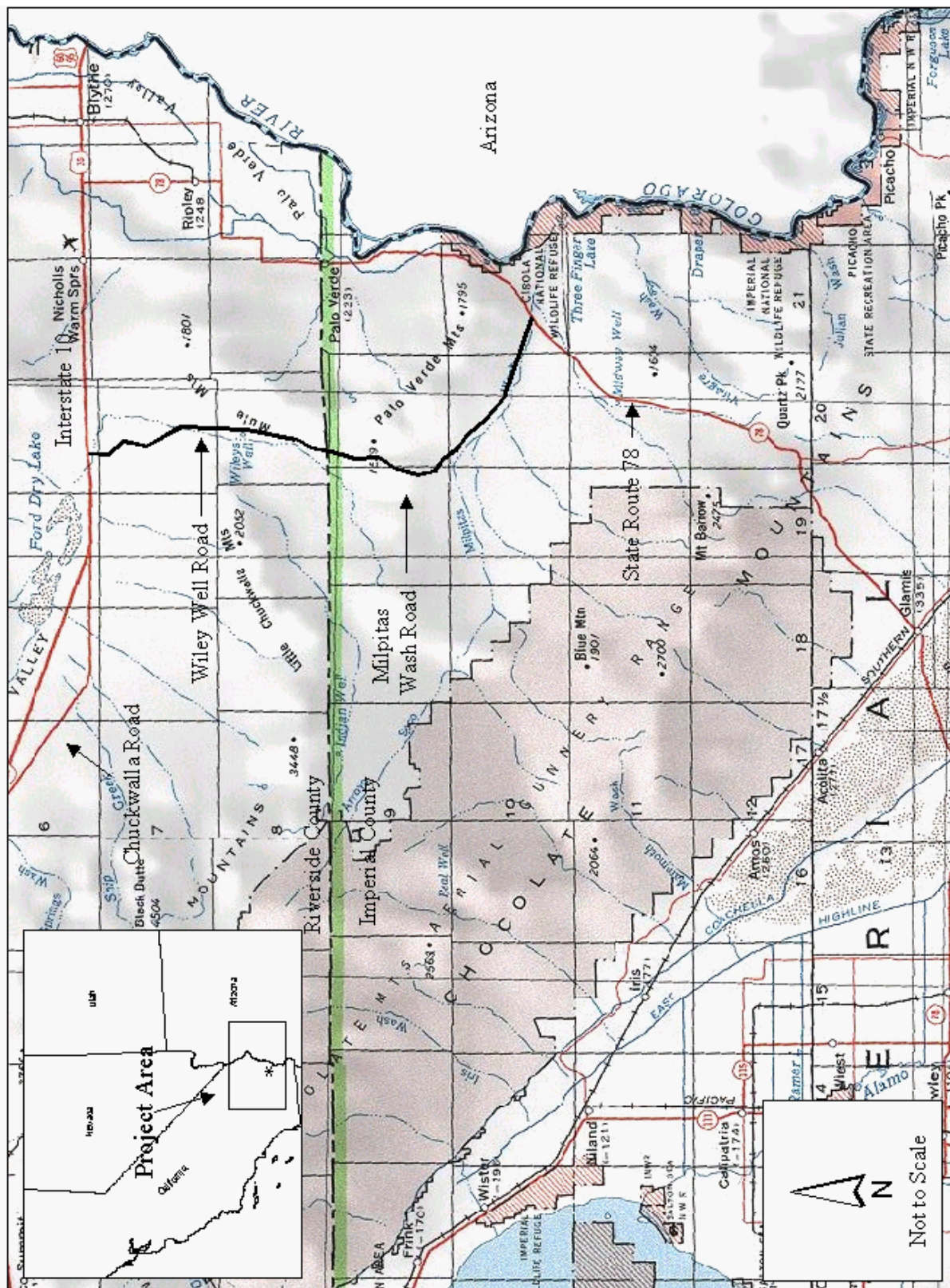
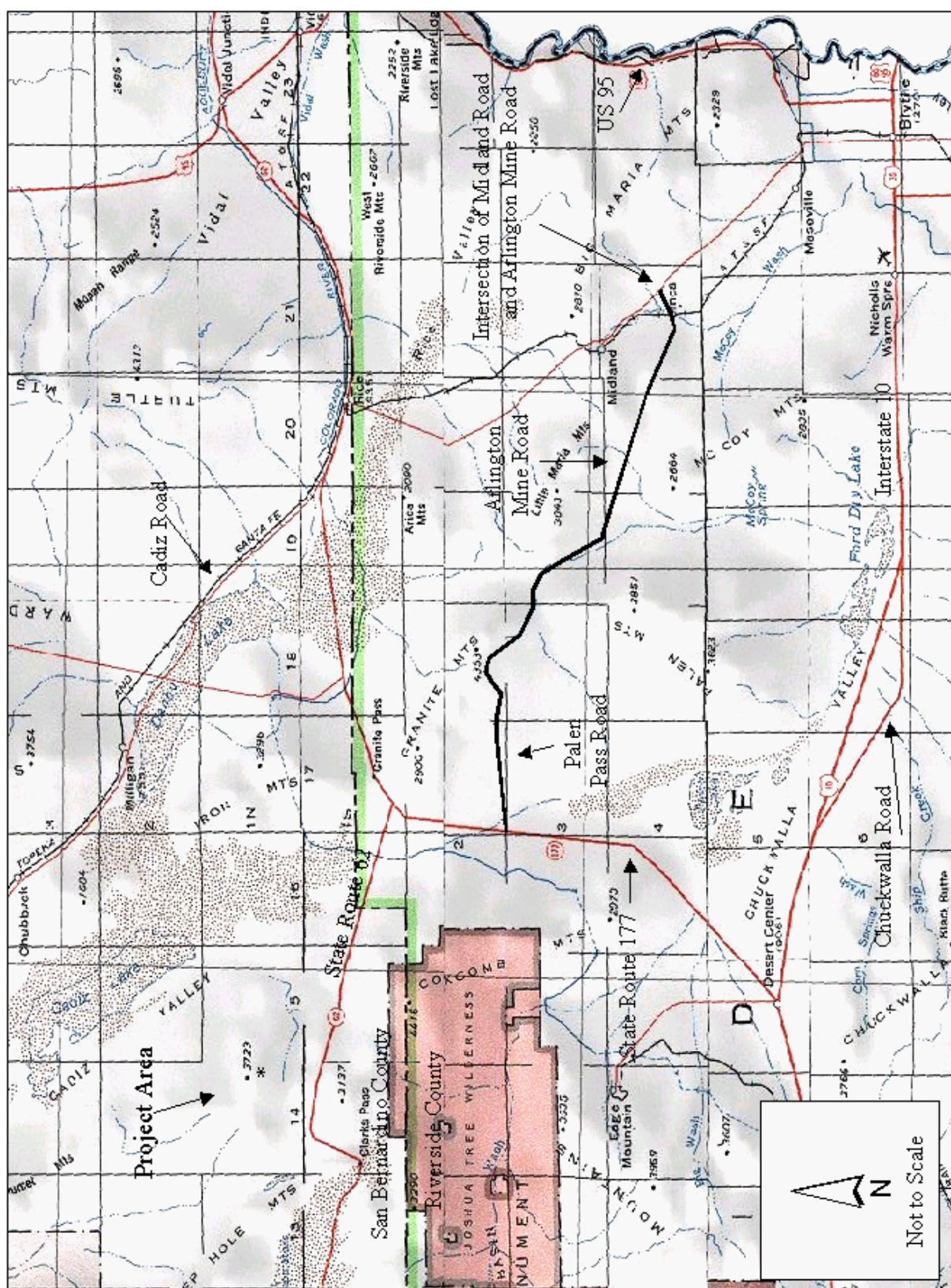


Figure 9. Wile Well Road/Milpitas Wash Road, California.



FIGURE 10



**Figure 10. Palen Pass Road/Arlington Mine Road, California.**