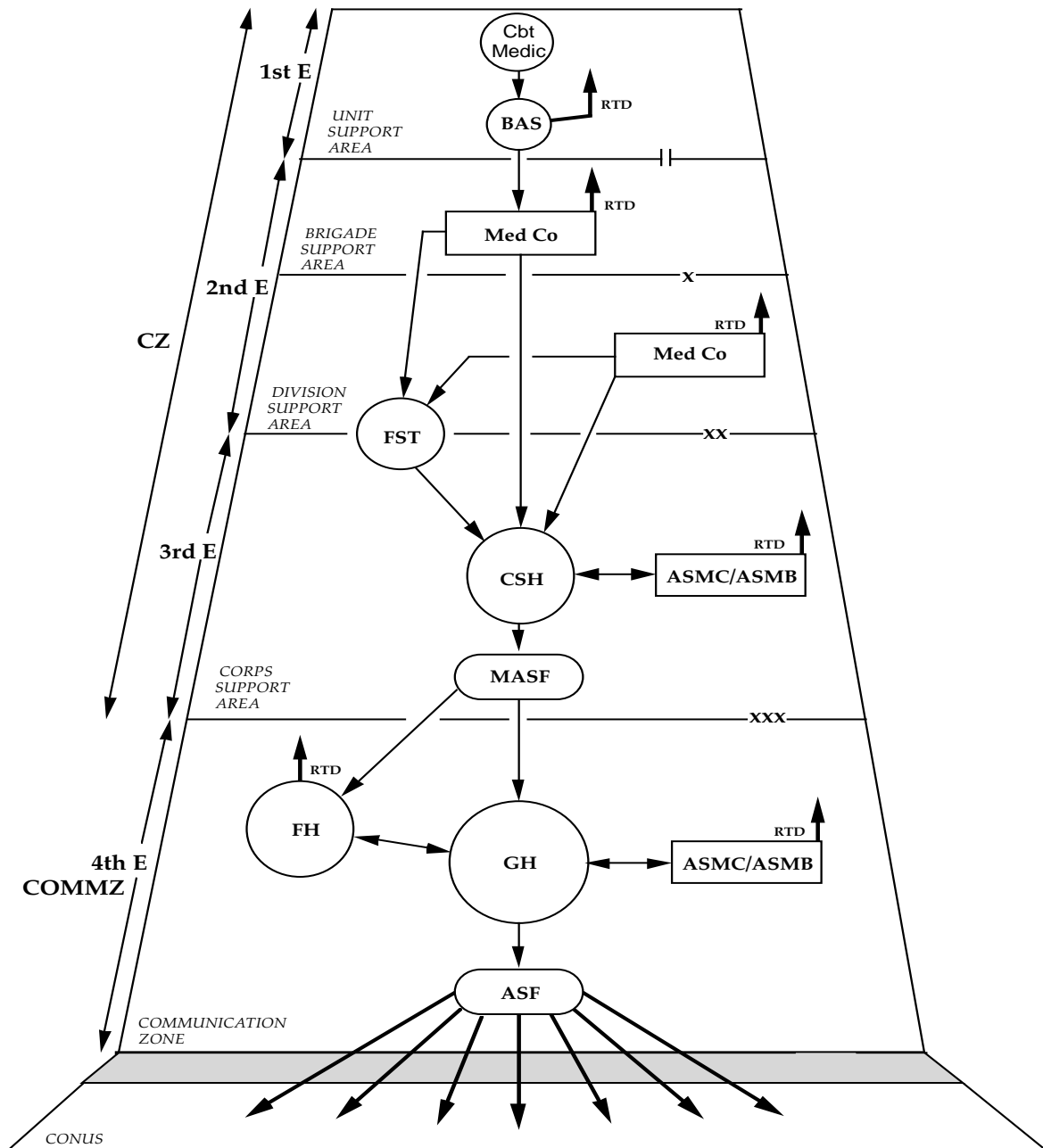

The current medical system to support the U.S. Army at war is a continuum from the forward line of troops through the continental United States; it serves as a primary source of trained replacements during the early stages of a major conflict. The system is designed to optimize the return to duty of the maximum number of trained combat soldiers at the lowest possible level. Far-forward stabilization helps to maintain the physiology of injured soldiers who are unlikely to return to duty and allows for their rapid evacuation from the battlefield without needless sacrifice of life or function.

Medical Force 2000 (MF2K) PATIENT FLOW IN A THEATER OF OPERATIONS



- | | | | |
|------------|------------------------------------|---------|---|
| ASF: | Aeromedical Staging Facility, USAF | E: | Echelon |
| ASMB: | Area Support Medical Battalion | FH: | Field Hospital |
| ASMC: | Area Support Medical Company | FST: | Forward Surgical Team |
| BAS: | Battalion Aid Station | GH: | General Hospital |
| Cbt Medic: | Combat Medic | MASF: | Mobile Aeromedical Staging Facility, USAF |
| CSH: | Combat Support Hospital | Med Co: | Medical Company |
| COMMZ: | Communication Zone | RTD: | Return to Duty |
| CZ: | Combat Zone | | |