

UNCLASSIFIED

CLASSIFICATION:

EXHIBIT R-2, RDT&E Budget Item Justification							DATE: June 2001			
APPROPRIATION/BUDGET ACTIVITY RDT&E, N /BA-7 Operational Sys Dev				PROGRAM ELEMENT (PE) NAME AND NO. 0206624M Marine Corps Combat Services Support						
COST (\$ in Millions)	FY 2000	FY 2001	FY 2002	FY 2003	FY 2004	FY 2005	FY 2006	FY 2007	Cost to Complete	Total Program
Total PE Cost	11.852	3.876	8.483	0.000	0.000	0.000	0.000	0.000	Cont	Cont
C0076 Medium Tactical Vehicle Replacement (MTVR)	5.178	1.018	2.011	0.000	0.000	0.000	0.000	0.000	0.000	8.207
C0201 Logistical Vehicle Replacement (LVSF)	2.686	0.007	0.000	0.000	0.000	0.000	0.000	0.000	0.000	2.693
C2316 Combat Services Support Engineering Equipment	3.176	1.558	5.894	0.000	0.000	0.000	0.000	0.000	0.000	10.628
C2509 Motor Transport Modernization	0.812	1.293	0.256	0.000	0.000	0.000	0.000	0.000	Cont	Cont
C2929 Testing Measuring Diagnostic Equip (TMDE) & SE	0.000	0.000	0.322	0.000	0.000	0.000	0.000	0.000	Cont	Cont
Quantity of RDT&E Articles										
<p>(U) A. MISSION DESCRIPTION AND BUDGET ITEM JUSTIFICATION:</p> <p>This program element (PE) provides funding for Marine Air-Ground Task Force requirements for Combat Service Support equipment improvement. It will enhance combat breaching capabilities of the ground combat elements, provide potable water from any available raw water source, logistics, maintenance and transportation requirements. It will also determine the reconfiguration of the current Twin Agent Unit firefighting apparatus and provide a portable, highly mobile general-purpose automatic tester designed for use by technicians in the garrison and at the forward edge of the battlefield.</p> <p>The PE also provides improvements in all areas of Combat Service Support Equipment Vehicles by determining the replacement for the heavy, medium and light fleet vehicles. Alternative Power Sources for Communications Equipment (APSCE) is a suite of devices that provides the commander with the capability to use existing power to operate his communication equipment, computers and peripheral equipment instead of using batteries or fossil fuel generators. The Marine Corps Family of Automatic Test Systems (ATS), formerly TETS, provides automatic testing capability for use by technicians both in garrison and forward edge of Battlefield</p>										

UNCLASSIFIED

CLASSIFICATION:

EXHIBIT R-2, RDT&E Budget Item Justification		DATE:
		June 2001
APPROPRIATION/BUDGET ACTIVITY RDT&E, N /BA-7 Operational Sys Dev	PROGRAM ELEMENT (PE) NAME AND NO. 0206624M Marine Corps Combat Services Support	
B. PROGRAM CHANGE SUMMARY		
	FY2000	FY2001
(U) FY 2001 President's Budget:	8.337	2.854
(U) Adjustments from the President's Budget:		
(U) SBIR/STTR Transfer	-0.137	0.000
(U) Execution Adjustment	1.328	0.000
(U) Minor Affordability Adjustment	-0.039	-0.026
(U) Program Adjustment	2.363	1.048
(U) FY 2002 President's Budget:	11.852	3.876
CHANGE SUMMARY EXPLANATION:		
(U) Funding: See Above.		
(U) Schedule: Not Applicable.		
(U) Technical: Not Applicable.		

UNCLASSIFIED

CLASSIFICATION:

EXHIBIT R-2a, RDT&E Project Justification							DATE:			
							June 2001			
APPROPRIATION/BUDGET ACTIVITY RDT&E, N /BA-7 Operational Sys Dev	PROGRAM ELEMENT NUMBER AND NAME 0206624M Marine Corps Combat Services Support				PROJECT NUMBER AND NAME C0076 Medium Tactical Vehicle Replacement (MTVR)					
COST (\$ in Millions)	FY 2000	FY 2001	FY 2002	FY 2003	FY 2004	FY 2005	FY 2006	FY 2007	Cost to Complete	Total Program
Project Cost	5.178	1.018	2.011	0.000	0.000	0.000	0.000	0.000	0.000	8.207
RDT&E Articles Qty										

(U) A. MISSION DESCRIPTION AND BUDGET ITEM JUSTIFICATION:

The Medium Tactical Vehicle Replacement (MTVR) Program will determine the replacement vehicle for the Medium 5-ton fleet. This project will increase mobility, maintainability, and reliability for the medium fleet.

PROGRAM ACCOMPLISHMENTS AND PLANS

FY 2000 Accomplishments:

- (U) \$ 4.259 Continued MTVR variant prototype development.
- (U) \$ 0.919 Initial Operational Test and Evaluation.

(U) Total \$ 5.178

FY 2001 Planned Program

- (U) \$ 1.018 Begin MTVR variant prototype testing.

(U) Total \$ 1.018

FY 2002 Planned Program

- (U) \$ 2.011 Complete MTVR variant prototype development and testing.

(U) Total \$ 2.011

	FY2000	FY2001	FY2002
(U) FY 2001 President's Budget:	6.776	1.027	2.026
(U) Adjustments from the President's Budget:			
(U) SBIR/STTR Transfer	-0.081		
(U) Execution Adjustment	-0.935		
(U) Minor Affordability Adjustment	-0.027	-0.009	-0.033
(U) Program Adjustment	-0.555		0.018
(U) FY 2002 President's Budget:	5.178	1.018	2.011

CHANGE SUMMARY EXPLANATION:

- (U) Funding: See Above.
- (U) Schedule: Not Applicable.
- (U) Technical: Not Applicable.

UNCLASSIFIED

CLASSIFICATION:

EXHIBIT R-2a, RDT&E Project Justification							DATE:		
							June 2001		
APPROPRIATION/BUDGET ACTIVITY		PROGRAM ELEMENT NUMBER AND NAME			PROJECT NUMBER AND NAME				
RDT&E, N /BA-7 Operational Sys Dev		0206624M Marine Corps Combat Services Suppo			C0076 Medium Tactical Vehicle Replacement (MTVR)				
(U) B. OTHER PROGRAM FUNDING SUMMARY:									
<u>Line Item No. & Name</u>	FY 2000	FY 2001	FY 2002	FY 2003	FY 2004	FY 2005	FY 2006	FY 2007 To Compl	Total Cost
(U) PMC Line (BLI# 508800) MTVR	138.315	322.594	312.199	0.000	0.000	0.000	0.000	0.000	0.000
(U) Related RDT&E:									
(U) PE 0206623M Marine Corps Ground Combat Supporting Arms Systems									
(U) PE 0603640M Marine Corps Advanced Technology Demonstration									
(U) PE 0604804A Logistics and Engineering Equip/Engr Development									
(U) PE 0206313M Marine Corps Communications									
(U) C. ACQUISITION STRATEGY:									
The Medium Tactical Vehicle Replacement (MTVR) production program is a multi-year, fixed price contract with an economic price adjustment.									
The program has both an Acquisition Strategy and an Acquisition Plan that addresses the total program fielding. The contractor will deliver 5,666 vehicles on the base contract, with 2,502 vehicles included as options. There are four MTVR configurations, which include standard cargo, extra long wheel base cargo, dump and wrecker. The Acquisition Strategy includes Contractor Logistics Support (CLS) after fielding.									

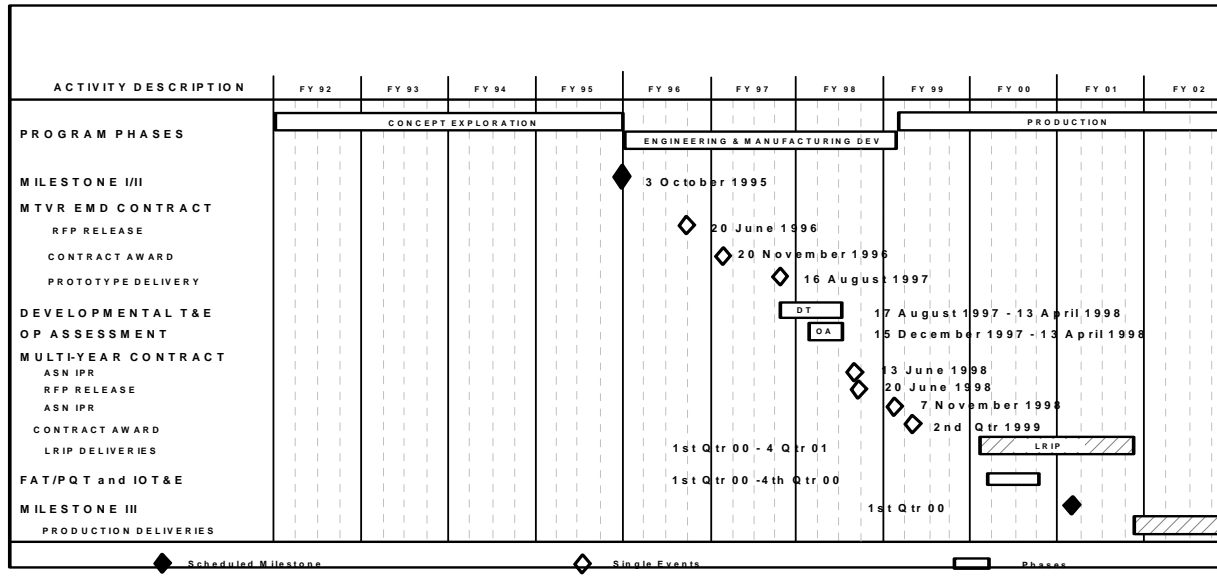
UNCLASSIFIED

CLASSIFICATION:

EXHIBIT R-2a, RDT&E Project Justification			DATE:	June 2001
APPROPRIATION/BUDGET ACTIVITY	PROGRAM ELEMENT NUMBER AND NAME	PROJECT NUMBER AND NAME		
RDTE, N /BA-7 Operational Sys Dev	0206624M Marine Corps Combat Services Suppo	C0076 Medium Tactical Vehicle Replacement (MTVR)		

(U) D. SCHEDULE PROFILE:

MEDIUM TACTICAL VEHICLE REPLACEMENT SCHEDULE



Program Funding Summary (APPN, BLI #, NOMEN)

	FY 2000	FY 2001	FY 2002	FY 2003	FY 2004	FY 2005	FY 2006	FY 2007 To Compl	Total Cost
(U) RDTE,N	5.178	1.018	2.011					0.000	8.207
(U) PMC, BLI# 508800 MTVR	138.315	322.594	312.199	0.000	0.000	0.000		0.000	Cont.

UNCLASSIFIED

CLASSIFICATION:

Exhibit R-3 Cost Analysis								DATE: June 2001				
APPROPRIATION/BUDGET ACTIVITY RDT&E, N /BA 7 Operational Sys Dev			PROGRAM ELEMENT 0206624M Marine Corps Combat Services Spt				PROJECT NUMBER AND NAME C0076 Medium Tactical Veh Replacement (MTVR)					
Cost Categories (Tailor to WBS, or Sys/Item Requirements)	Contract Method & Type	Performing Activity & Location	Total PY s Cost	FY 00 Cost	FY 00 Award Date	FY 01 Cost	FY 01 Award Date	FY 02 Cost	FY 02 Award Date	Cost to Complete	Total Cost	Target Value of Contract
Primary Hardware Dev											0.000	
Ancillary Hardware Dev											0.000	
Systems Engineering											0.000	
Licenses											0.000	
Tooling											0.000	
GFE											0.000	
Award Fees											0.000	
	MIPR	TACOM, Michigan	12.893	4.259	03/00					0.000	17.152	17.152
Subtotal Product Dev			12.893	4.259		0.000		0.000		Continuing	Continuing	
Remarks:												
Cost Categories (Tailor to WBS, or System/Item Requirements)	Contract Method & Type	Performing Activity & Location	Total PY s Cost	FY 00 Cost	FY 00 Award Date	FY 01 Cost	FY 01 Award Date	FY 02 Cost	FY 02 Award Date	Cost to Complete	Total Cost	Target Value of Contract
Development Support Equip											0.000	
Software Development											0.000	
Training Development											0.000	
Integrated Logistics Support											0.000	
Configuration Management											0.000	
Technical Data											0.000	
	MIPR	TACOM, Michigan	2.891							0.000	2.891	2.891
	RCP	MKI	0.502							0.000	0.502	0.502
	WR	MCSC, Quantico, VA	0.331							0.000	0.331	0.331
Subtotal Support			3.724	0.000		0.000		0.000				
Remarks:												
Cost Categories (Tailor to WBS, or System/Item Requirements)	Contract Method & Type	Performing Activity & Location	Total PY s Cost	FY 00 Cost	FY 00 Award Date	FY 01 Cost	FY 01 Award Date	FY 02 Cost	FY 02 Award Date	Cost to Complete	Total Cost	Target Value of Contract
Developmental Test & Eval											0.000	
Operational Test & Eval											0.000	
Tooling											0.000	
	MIPR	TACOM, Michigan	5.198			0.260	01/01	1.211	11/01		6.669	6.669
	WR	MCOTEA, Quantico		0.919		0.758		0.800			2.477	2.992
Subtotal T&E			5.198	0.919		1.018		2.011			9.146	
Remarks:												

UNCLASSIFIED

CLASSIFICATION:

Exhibit R-3 Cost Analysis										DATE: June 2001			
APPROPRIATION/BUDGET ACTIVITY RDT&E, N /BA 7 Operational Sys Dev			PROGRAM ELEMENT 0206624M Marine Corps Combat Services Spt					PROJECT NUMBER AND NAME C0076 Medium Tactical Veh Replacement (MTVR)					
Cost Categories (Tailor to WBS, or System/Item Requirements)	Contract Method & Type	Performing Activity & Location	Total PY s Cost	FY 00 Cost	FY 00 Award Date	FY 01 Cost	FY 01 Award Date	FY 02 Cost	FY 02 Award Date	Cost to Complete	Total Cost	Target Value of Contract	
Contractor Eng Suppt											0.000		
Govt Engineering Suppt											0.000		
Program Mngmnt Suppt											0.000		
Travel											0.000		
Labor (Research Personnel)											0.000		
Overhead											0.000		
Subtotal Management			0.000	0.000		0.000		0.000		0.000	0.000		
Remarks:													
Total Cost				5.178		1.018		2.011		0.000	8.207		

UNCLASSIFIED

CLASSIFICATION:

EXHIBIT R-2a, RDT&E Project Justification							DATE: June 2001			
APPROPRIATION/BUDGET ACTIVITY RDT&E, N /BA-7 Operational Sys Dev	PROGRAM ELEMENT NUMBER AND NAME 0206624M Marine Corps Combat Services Support				PROJECT NUMBER AND NAME C2316 Combat Services Support Engineering Equipment					
COST (\$ in Millions)	FY 2000	FY 2001	FY 2002	FY 2003	FY 2004	FY 2005	FY 2006	FY 2007	Cost to Complete	Total Program
Project Cost	3.176	1.558	5.894	0.000	0.000	0.000	0.000	0.000	0.000	10.628
RDT&E Articles Qty										
(U) A. MISSION DESCRIPTION AND BUDGET ITEM JUSTIFICATION: with the maneuver force. It will breach minefields with Marine Corps integrated items to include a full width mine plow, two line charges, remote control kit, weapons station and ground marking system. The ABV is a fully tracked, heavy protection level combat system used to enhance the combat breaching capabilities of the ground combat elements. The overall system is integrated on the ABRAMS tank chassis to provide commonality with the tank fleet while providing the latest technology in direct fire armor protection. It will provide capabilities to breach minefields, neutralize obstacles, and demolish berms. producing 1,200/1,500 gallons per hour (GPH). This system will replace the aging 600 GPH ROWPUs at a 2 old systems to 1 enhanced system ratio. The 1500-ROWPU will reduce logistics, maintenance, and transportation requirements allowing significant potential cost avoidance in out year support costs. The 1500-ROWPU is a joint Marine Corps program with the Army as the lead service. The Marine Corps Family of Automatic Test Systems (ATS) provides automatic testing capability for use by technicians both in garrison and at the forward edge of the battlefield.										
PROGRAM ACCOMPLISHMENTS AND PLANS										
FY 2000 Accomplishments: <ul style="list-style-type: none">• (U) \$ 0.101 ATS: Assessed integration of Measurement Hardware Emulator into the USMC Automatic Test Systems Platform.• (U) \$ 0.118 ABV: Conducted Manpower Study to determine impact on operational forces to operate and maintain the ABV.• (U) \$ 2.957 ABV: Systems engineering/integration, trade studies, build prototype and conduct proof of principle testing. (U) Total \$ 3.176										
FY 2001 Planned Program <ul style="list-style-type: none">• (U) \$ 0.404 1500-ROWPU: Test and evaluate ancillary equipment to include membrane cleaning and preservation system and ocean intake structures.• (U) \$ 0.109 ATS: Initiate development of new Revision D technology for Simplified Test Equipment for Internal Combustion Engines (STE ICE) replacement.• (U) \$ 0.397 ABV: Program management support/travel.• (U) \$ 0.648 ABV: Continue systems engineering/integration, trade studies, build prototype and conduct proof of principle testing. (U) Total \$ 1.558										
FY 2002 Planned Program <ul style="list-style-type: none">• (U) \$ 1.782 ABV: Program management support, travel, technical manuals and drawings. Funding in support and management includes gaining safety certification from the Weapons Systems Safety Explosive Review Board (WSSERB).• (U) \$ 1.440 ABV: Begin developmental testing.• (U) \$ 2.672 ABV: Integration of line charges, ground-marking system, weapons station, remote control kit. (U) Total \$ 5.894										

UNCLASSIFIED

CLASSIFICATION:

EXHIBIT R-2a, RDT&E Project Justification						DATE:				
						June 2001				
APPROPRIATION/BUDGET ACTIVITY	PROGRAM ELEMENT NUMBER AND NAME			PROJECT NUMBER AND NAME						
RDT&E, N /BA-7 Operational Sys Dev	0206624M Marine Corps Combat Services Support			C2316 Combat Services Support Engineering Equipment						
	FY2000	FY2001	FY2002							
(U) FY 2001 President's Budget:	0.267	0.515	0.138							
(U) Adjustments from the President's Budget:										
(U) SBIR/STTR Transfer	-0.048									
(U) Execution Adjustment										
(U) Minor Affordability Adjustment	-0.007	-0.005	-0.062							
(U) Program Adjustment	2.964	1.048	5.818							
(U) FY 2002 President's Budget:	3.176	1.558	5.894							
CHANGE SUMMARY EXPLANATION:										
(U) Funding: See Above.										
(U) Schedule: Not Applicable.										
(U) Technical: Not Applicable.										
(U) B. OTHER PROGRAM FUNDING SUMMARY:										
Line Item No. & Name	FY 2000	FY 2001	FY 2002	FY 2003	FY 2004	FY 2005	FY 2006	FY 2007 To Compl	Total Cost	
(U) PMC Line (BLI# 627400) 1500 ROWPU			5.686	0.000	0.000	0.000	0.000	0.000	Continuing	Continuing
(U) PMC Line (BLI# 440200) TETS	28.747	4.670	0.616						0.000	34.033
(U) PMC Line (BLI# 613300) ABV					0.000	0.000	0.000		0.000	0.000
(U) Related RDT&E:										
(U) PE 0206623M Marine Corps Ground Combat Supporting Arms Systems										
(U) PE 0603640M Marine Corps Advanced Technology Demonstration										
(U) PE 0604804A Logistics and Engineering Equip/Engr Development										
(U) PE 0206313M Marine Corps Communications										
(U) C. ACQUISITION STRATEGY:										
ATS: The ATS program will determine the replacement for STE ICE and identify technology insertions that will enable automatic test systems to meet weapon system testing requirements. The program will be managed by PM Test, Measurement and Diagnostic Equipment (TMDE) with engineering support from the Automatic Test Equipment Program (ATEP), Albany, GA. Systems Engineering support and product development for the STE ICE replacement will come from Army Research, Development and Engineering Center (ARDEC), Huntsville, AL., through use of a MIPR.										
ABV: SYSTEM DEVELOPMENT & DEMONSTRATION PHASE: Conduct modeling to support vehicle platform choice and trade studies for mine plows. Upon program initiation build Demonstrator vehicle. Modeling applications to support Analysis of Alternatives/Testing & Evaluation Alternatives (AOA/TEA). Contract with Anniston Depot/General Dynamics Land Systems (GDLS) to integrate full width mine plow to M1A1. Conduct plow test on M1A1 tank with full width mine plow. Conduct AOA/TEA. Conduct trade study (examining capabilities and cost to down select).										

UNCLASSIFIED

CLASSIFICATION:

EXHIBIT R-2a, RDT&E Project Justification		DATE: June 2001
APPROPRIATION/BUDGET ACTIVITY RDT&E, N /BA-7 Operational Sys Dev	PROGRAM ELEMENT NUMBER AND NAME 0206624M Marine Corps Combat Services Support	PROJECT NUMBER AND NAME C2316 Combat Services Support Engineering Equipment
<p>PROGRAM DEFINITION AND RISK REDUCTION/ENGINEERING & MANUFACTURING DEVELOPMENT PHASE: Integrate line charges to M1A1 (if M1A1 is chosen following down select). Integrate remote control unit and Ground Marking System. Conduct plow testing against mines and obstacles. LRIP decision. LRIP 4 vehicles. Conduct IOT&E, RAM and live mine test.</p> <p>PRODUCTION, FIELDING/DEPLOYMENT & OPERATIONAL SUPPORT PHASE: Fixed price contract for 44 systems, provide platform as Government Furnished Equipment (GFE). Initial Operational Capability (IOC) (FY05); Full Operational Capability (FOC) (FY06).</p> <p>1500-ROWPU: Joint US Army/US Marine Corps program (US Army lead). Adopted US Army Operational Requirements Document (ORD) with USMC Organization & Operations (O&O). Integrated product and process management. Prototype hardware development using Advanced Technology and Mature Design. Continue to monitor Army Engineering and Manufacturing Development (EMD) progress. Conduct USMC testing during Initial Operational Testing & Evaluation (IOT&E).</p> <p>SCHEDULE: Production qualification test - (May-July 00); Milestone IIIA - (Jan 01); Award Low-Rate Initial Production (LRIP) contract - (Feb 01); IOT&E - (Jun-Aug 01); First Article Test (FAT) - (Apr-Jun 02); Milestone III - (Sep 02); IOC - (Apr 03); FOC - (Dec 05)</p>		

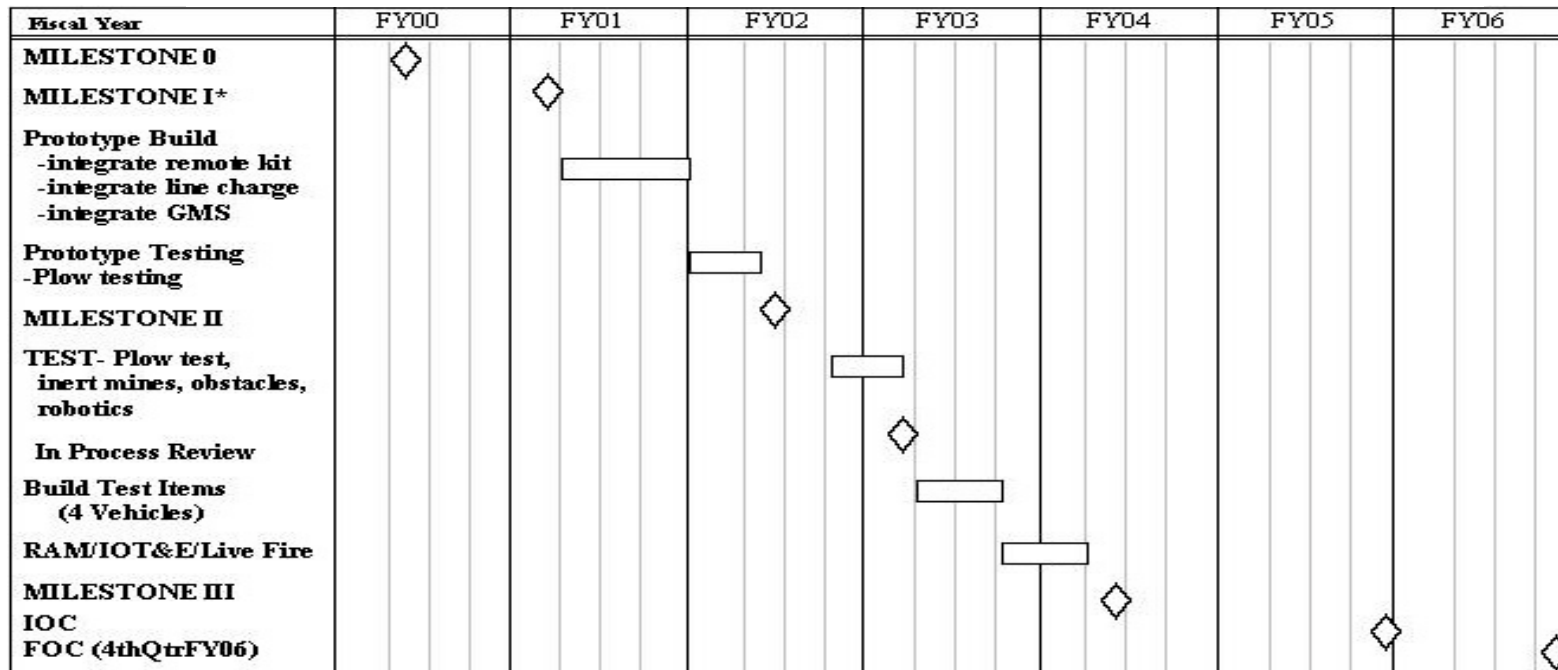
UNCLASSIFIED

CLASSIFICATION:

EXHIBIT R-2a, RDT&E Project Justification		DATE:
		June 2001
APPROPRIATION/BUDGET ACTIVITY	PROGRAM ELEMENT NUMBER AND NAME	PROJECT NUMBER AND NAME
RDT&E, N /BA-7 Operational Sys Dev	0206624M Marine Corps Combat Services Support	C2316 Combat Services Support Engineering Equipment

(U) D. SCHEDULE PROFILE:

Schedule: ASSAULT BREACHER VEHICLE



Program Funding Summary
(APPN, BLI #, NOMEN)

(U) RDT&E,N

(U) PMC, BLI# 613300 ABV

	<u>FY 2000</u>	<u>FY 2001</u>	<u>FY 2002</u>	<u>FY 2003</u>	<u>FY 2004</u>	<u>FY 2005</u>	<u>FY 2006</u>	<u>FY 2007 To Compl</u>	<u>Total Cost</u>
(U) RDT&E,N	3.075	1.045	5.894	0.000	0.000			0.000	Cont.
(U) PMC, BLI# 613300 ABV					0.000	0.000	0.000	Cont	Cont.

UNCLASSIFIED

CLASSIFICATION:

Exhibit R-3 Cost Analysis								DATE: June 2001				
APPROPRIATION/BUDGET ACTIVITY RDTE&E, N /BA 7 Operational Sys Dev				PROGRAM ELEMENT 0206624M Marine Corps Combat Services Spt				PROJECT NUMBER AND NAME C2316 Combat Services Support Engineering Equip				
Cost Categories (Tailor to WBS, or Sys/Item Requirements)	Contract Method & Type	Performing Activity & Location	Total PY s Cost	FY 00 Cost	FY 00 Award Date	FY 01 Cost	FY 01 Award Date	FY 02 Cost	FY 02 Award Date	Cost to Complete	Total Cost	Target Value of Contract
Primary Hardware Dev											0.000	
Ancillary Hardware Dev											0.000	
Systems Engineering											0.000	
Licenses											0.000	
Tooling											0.000	
GFE											0.000	
Award Fees											0.000	
	MIPR	TACOM, Michigan	0.741	2.530		0.932		2.672		6.941	13.816	13.816
	Various	Various	0.288							0.000	0.288	0.288
	MIPR	NSWC, Crane, IN				0.120				0.215	0.335	0.335
Subtotal Product Dev			1.029	2.530		1.052		2.672		7.156	14.439	
Remarks:												
Cost Categories (Tailor to WBS, or System/Item Requirements)	Contract Method & Type	Performing Activity & Location	Total PY s Cost	FY 00 Cost	FY 00 Award Date	FY 01 Cost	FY 01 Award Date	FY 02 Cost	FY 02 Award Date	Cost to Complete	Total Cost	Target Value of Contract
Development Support Equip											0.000	
Software Development											0.000	
Training Development											0.000	
Integrated Logistics Support											0.000	
Configuration Management											0.000	
Technical Data											0.000	
	RCP	MKI/SVERDRUP	0.068	0.300		0.197	12/00	0.200		0.628	1.393	1.393
	RCP	MCSC, Quantico, VA	0.216	0.245		0.200	02/01	0.982		0.185	1.828	1.828
	WR	Albany	0.105	0.101		0.109		0.600		0.643	1.558	1.558
Subtotal Support			0.389	0.646		0.506		1.782		1.456	4.779	
Remarks:												

R-1 SHOPPING LIST - Item No. 192

UNCLASSIFIED

Exhibit R-3, Project Cost Analysis
(Exhibit R-3, page 12 of 18)

UNCLASSIFIED

CLASSIFICATION:

Exhibit R-3 Cost Analysis								DATE: June 2001				
APPROPRIATION/BUDGET ACTIVITY RDT&E, N /BA 7 Operational Sys Dev			PROGRAM ELEMENT 0206624M Marine Corps Combat Services Spt				PROJECT NUMBER AND NAME C2316 Combat Services Support Engineering Equip					
Cost Categories (Tailor to WBS, or System/Item Requirements)	Contract Method & Type	Performing Activity & Location	Total PY s Cost	FY 00 Cost	FY 00 Award Date	FY 01 Cost	FY 01 Award Date	FY 02 Cost	FY 02 Award Date	Cost to Complete	Total Cost	Target Value of Contract
Developmental Test & Eval											0.000	
Operational Test & Eval											0.000	
Tooling											0.000	
	MIPR	TACOM	0.295					1.440		0.550	2.285	2.285
	WR	MCOTEA, Quantico, VA								0.750	0.750	0.750
	MIPR	APG, MD	0.160							0.936	1.096	1.096
Subtotal T&E			0.455	0.000		0.000		1.440		2.236	4.131	
Remarks:												
Cost Categories (Tailor to WBS, or System/Item Requirements)	Contract Method & Type	Performing Activity & Location	Total PY s Cost	FY 00 Cost	FY 00 Award Date	FY 01 Cost	FY 01 Award Date	FY 02 Cost	FY 02 Award Date	Cost to Complete	Total Cost	Target Value of Contract
Contractor Eng Suppt											0.000	
Govt Engineering Suppt											0.000	
Program Mngmnt Suppt											0.000	
Travel											0.000	
Labor (Research Personnel)											0.000	
Overhead											0.000	
Subtotal Management			0.000	0.000		0.000		0.000		0.000	0.000	
Remarks:												
Total Cost			1.873	3.176		1.558		5.894		10.848	23.349	

UNCLASSIFIED

CLASSIFICATION:

EXHIBIT R-2a, RDT&E Project Justification								DATE:			
								June 2001			
APPROPRIATION/BUDGET ACTIVITY	PROGRAM ELEMENT NUMBER AND NAME					PROJECT NUMBER AND NAME					
RDT&E, N /BA-7 Operational Sys Dev	0206624M Marine Corps Combat Services Supp					C2509 Motor Transport Modernization					
COST (\$ in Millions)	Prior Yrs Cost	FY 2000	FY 2001	FY 2002	FY 2003	FY 2004	FY 2005	FY 2006	FY 2007	Cost to Complete	Total Program
Project Cost	0.000	0.812	1.293	0.256	0.000	0.000	0.000	0.000	0.000	Cont	Cont
RDT&E Articles Qty											
(U) A. MISSION DESCRIPTION AND BUDGET ITEM JUSTIFICATION:											
The Marine Corps Tactical Transportation Program manages procurement and life cycle sustainment for more than 40,000 principle end items divided among four fleets: Light Fleet, Medium Fleet, Heavy Fleet, and Special Fleet. A sustained effort is maintained in the Marine Corps for development and testing in support of fleet Service Life Extension Program (SLEP) initiatives, vehicle quality deficiency resolutions, safety initiatives, environmental/state transportation mandated vehicle changes, and system component refresh modernization efforts. Given transportation asset operational availability declines at a steady rate over time, Service Life Extension Programs (SLEP), Fleet overhauls, and enhanced depot level modernization is essential in maintaining a viable transportation capability in the Marine Corps Operating Forces. This project line allows for a consolidated and prioritized approach to USMC modernization and SLEP of transportation assets. It provides a bridge for technology insertion and transition efforts to PM Transportation from Advanced Technology Demonstrations/Advanced Concept Technology Demonstrations (ATDs and ACTDs), Warfighting Experimentation, and outputs from Industry/DoD											
and foreign cooperative research efforts in support of Marine Corps tactical vehicle fleet sustainment. This program line specifically develops Marine Corps unique improvements/modernizations to transportation systems and supports monitoring the commercial automotive industrial base for technology insertions to increase Reliability Availability and Maintainability, Durability (RAM-D), reduce total ownership costs, resolve unplanned safety hazards, and monitor/implement emerging state and federal transportation/environmental regulations as required. This is a sustained program line for “level of effort” programs. Funding will focus on streamlined acquisitions of Commercial-Off-the-Shelf/Non-Developmental Items (COTS/NDI) that can be identified, integrated, and tested in a short amount of time. Successful modifications/modernizations and tests are intended for follow-on procurement and incorporation into existing system component upgrades, SLEPs, or rapid COTS/NDI fielding for the Fleet Marine Force (FMF).											
PROGRAM ACCOMPLISHMENTS AND PLANS											
FY 2000 Accomplishments:											
<ul style="list-style-type: none">• (U) \$ 0.032 Logistical Vehicle System (LVS): Program Management and travel in support of Transportation Systems modifications, COTS/NDI modernizations, and SLEP.• (U) \$ 0.119 LVS: Initiated integration and evaluation on Transportation Systems modifications, COTS/NDI modernizations, and SLEP.• (U) \$ 0.162 Aviation Refueler Capability (ARC): Purchased Aviation Refueler prototype for testing.• (U) \$ 0.479 ARC: Initiate and complete testing. Initiate and complete operation evaluation of the Aviation Refueler.• (U) \$ 0.020 ARC: Provide travel in support of the Aviation Refueler.											
(U) Total \$ 0.812											

UNCLASSIFIED

CLASSIFICATION:

EXHIBIT R-2a, RDT&E Project Justification		DATE: June 2001
APPROPRIATION/BUDGET ACTIVITY RDT&E, N /BA-7 Operational Sys Dev	PROGRAM ELEMENT NUMBER AND NAME 0206624M Marine Corps Combat Services Support	PROJECT NUMBER AND NAME C2509 Motor Transport Modernization

FY 2001 Planned Program

- (U) \$ 0.053 MTM: Program Management and travel in support of Transportation Systems modifications, COTS/NDI modernizations.
- (U) \$ 0.194 MTM: Continue testing, intergration, evaluation of Transportation Systems modifications
- (U) \$ 0.026 SBIR: Portion of extramural program reserved for Small Business Innovation Research assessment in accordance with 15 USC 638.
- (U) \$ 0.326 LVS: Develop kits/platforms for Transportation Systems modifications, COTS/NDI modernizations, and SLEP
- (U) \$ 0.694 LVS: Continue testing, integration and evaluation on Transportation Systems modifications, COTS/NDI modernizations, and SLEP.

(U) Total \$ 1.293

FY 2002 Planned Program

- (U) \$ 0.038 Program Management and travel in support of Transportation Systems modifications, COTS/NDI modernizations, and SLEP.
- (U) \$ 0.218 Evaluate potential alternatives for LVS SLEPs.

(U) Total \$ 0.256

	FY2000	FY2001	FY2002
(U) FY 2001 President's Budget:	0.245	0.248	0.252
(U) Adjustments from the President's Budget:			
(U) SBIR/STTR Transfer	-0.005		
(U) Execution Adjustment	0.678		
(U) Minor Affordability Adjustment	-0.001	-0.019	
(U) Program Adjustment	-0.105	1.064	0.004
(U) FY 2002 President's Budget:	0.812	1.293	0.256

CHANGE SUMMARY EXPLANATION:

(U) Funding: See Above.

(U) Schedule: Not Applicable.

(U) Technical: Not Applicable.

(U) B. OTHER PROGRAM FUNDING SUMMARY:

Line Item No. & Name	FY 2000	FY 2001	FY 2002	FY 2003	FY 2004	FY 2005	FY 2006	FY 2007 To Compl	Total Cost
(U) PMC (BLI# 523000) < \$5M (MT-MOD)	7.042	10.840	1.239	0.000	0.000	0.000	0.000	0.000 Continuing	Continuing

(U) Related RDT&E: Not Applicable.

(U) C. ACQUISITION STRATEGY: This is a sustained program line for "level of effort" programs. Funding will focus on streamlined acquisitions of Commercial-Off-the-Shelf Non-Developmental Items (COTS/NDI) that can be identified, integrated, and tested in a short amount of time. Successful modifications/modernizations and tests are intended for follow-on procurement and incorporation into existing system component upgrades, SLEPs, or rapid COTS/NDI fielding for the Fleet Marine Force (FMF).

(U) D. SCHEDULE PROFILE: Not Applicable.

UNCLASSIFIED

CLASSIFICATION:

EXHIBIT R-2a, RDT&E Project Justification							DATE: June 2001			
APPROPRIATION/BUDGET ACTIVITY RDT&E, N /BA-7 Operational Sys Dev	PROGRAM ELEMENT NUMBER AND NAME 0206624M Marine Corps Combat Services Suppo				PROJECT NUMBER AND NAME C2929 Testing Measuring Diagnostic Equip (TMDE) & SE					
COST (\$ in Millions)	FY 2000	FY 2001	FY 2002	FY 2003	FY 2004	FY 2005	FY 2006	FY 2007	Cost to Complete	Total Program
Project Cost	0.000	0.000	0.322	0.000	0.000	0.000	0.000	0.000	Cont	Cont
RDT&E Articles Qty										

(U) A. MISSION DESCRIPTION AND BUDGET ITEM JUSTIFICATION:

Alternative Power Sources for Communications Equipment (APSCE) is a suite of devices that provides the commander with the capability to use existing power to operate his communication equipment, computers and peripheral equipment instead of using batteries or fossil fuel generators.

The Marine Corps Family of Automatic Test Systems (ATS), formerly TETS, provides automatic testing capability for use by technicians both in garrison and forward edge of Battlefield.

PROGRAM ACCOMPLISHMENTS AND PLANS

(U) **FY 2000 Accomplishments:** ATS funded in project C2316 in this PE.

(U) **FY 2001 Planned Program:** ATS funded in project C2316 in this PE.

(U) FY 2002 Planned Program

- (U) \$ 0.119 APSCE: Provide for research, evaluation, test and selection of alternative power source products for the APSDE suite of equipment.
 - (U) \$ 0.203 ATS: Continue development of new technology testing applications in support of emerging weapon systems.
- (U) Total \$ 0.322

UNCLASSIFIED

CLASSIFICATION:

EXHIBIT R-2a, RDT&E Project Justification							DATE:			
							June 2001			
APPROPRIATION/BUDGET ACTIVITY		PROGRAM ELEMENT NUMBER AND NAME			PROJECT NUMBER AND NAME					
RDT&E, N /BA-7 Operational Sys Dev		0206624M Marine Corps Combat Services Suppo			C2929 Testing Measuring Diagnostic Equip (TMDE) & SE					
		FY2000	FY2001	FY2002						
(U) FY 2001 President's Budget:		0.000	0.000	0.000						
(U) Adjustments from the President's Budget:										
(U) SBIR/STTR Transfer										
(U) Execution Adjustment										
(U) Minor Affordability Adjustment		0.004								
(U) Program Adjustment		0.318								
(U) FY 2002 President's Budget:		0.000	0.000	0.322						
CHANGE SUMMARY EXPLANATION:										
(U) Funding: See Above.										
(U) Schedule: Not Applicable.										
(U) Technical: Not Applicable.										
(U) B. OTHER PROGRAM FUNDING SUMMARY:										
<u>Line Item No. & Name</u>	FY 2000	FY 2001	FY 2002	FY 2003	FY 2004	FY 2005	FY 2006	FY 2007	To Compl	Total Cost
(U) PMC Line (BLI# 462000) APSCE			4.590	0.000	0.000	0.000	0.000	0.000	Continuing	Continuing
(U) PMC Line (BLI# 440200 ATE	28.747	4.670	0.616						0.000	34.033
(U) Related RDT&E:										
(U) PE 0206624M Marine Corps Ground Supporting Arms Systems, Project C2316										
(U) C. ACQUISITION STRATEGY: All work is being done in-house at MCLB, Albany, NSW, Seal Beach, CA and MCAGCC, 29 Palms, CA.										

UNCLASSIFIED

CLASSIFICATION:

EXHIBIT R-2a, RDT&E Project Justification				DATE: June 2001																																																	
APPROPRIATION/BUDGET ACTIVITY RDT&E, N /BA-7 Operational Sys Dev	PROGRAM ELEMENT NUMBER AND NAME 0206624M Marine Corps Combat Services Suppo	PROJECT NUMBER AND NAME C2929 Testing Measuring Diagnostic Equip (TMDE) & SE																																																			
(U) D. SCHEDULE PROFILE:																																																					
<table border="1" style="width: 100%; border-collapse: collapse;"> <tr> <th colspan="6">APSCE MILESTONE SCHEDULE</th> </tr> <tr> <th style="width: 40%;">PHASE</th> <th style="width: 10%;">FY 99</th> <th style="width: 10%;">FY 00</th> <th style="width: 10%;">FY 01</th> <th style="width: 10%;">FY 02</th> <th style="width: 10%;">FY 03</th> </tr> <tr> <td>MILESTONE 0</td> <td style="text-align: center;">▲</td> <td></td> <td></td> <td></td> <td></td> </tr> <tr> <td>MILESTONE I/II</td> <td></td> <td></td> <td style="text-align: center;">▲</td> <td></td> <td></td> </tr> <tr> <td>MILESTONE III</td> <td></td> <td></td> <td style="text-align: center;">▲</td> <td></td> <td></td> </tr> <tr> <td>PRODUCTION CONTRACT AWARD</td> <td></td> <td></td> <td></td> <td style="text-align: center;">▲</td> <td></td> </tr> <tr> <td>PRODUCTION</td> <td></td> <td></td> <td></td> <td style="text-align: center;">▲</td> <td></td> </tr> <tr> <td>IOC</td> <td></td> <td></td> <td></td> <td></td> <td style="text-align: center;">▲</td> </tr> </table>						APSCE MILESTONE SCHEDULE						PHASE	FY 99	FY 00	FY 01	FY 02	FY 03	MILESTONE 0	▲					MILESTONE I/II			▲			MILESTONE III			▲			PRODUCTION CONTRACT AWARD				▲		PRODUCTION				▲		IOC					▲
APSCE MILESTONE SCHEDULE																																																					
PHASE	FY 99	FY 00	FY 01	FY 02	FY 03																																																
MILESTONE 0	▲																																																				
MILESTONE I/II			▲																																																		
MILESTONE III			▲																																																		
PRODUCTION CONTRACT AWARD				▲																																																	
PRODUCTION				▲																																																	
IOC					▲																																																
<table style="width: 100%; border-collapse: collapse;"> <tr> <td style="width: 30%;">Program Funding Summary</td> <td style="width: 10%;"><u>FY 2000</u></td> <td style="width: 10%;"><u>FY 2001</u></td> <td style="width: 10%;"><u>FY 2002</u></td> <td style="width: 10%;"><u>FY 2003</u></td> <td style="width: 10%;"><u>FY 2004</u></td> <td style="width: 10%;"><u>FY 2005</u></td> <td style="width: 10%;"><u>FY 2006</u></td> <td style="width: 10%;"><u>FY 2007 To Compl</u></td> <td style="width: 10%;"><u>Total Cost</u></td> </tr> <tr> <td>(APPN, BLI #, NOMEN)</td> <td></td> <td></td> <td></td> <td></td> <td></td> <td></td> <td></td> <td></td> <td></td> </tr> <tr> <td>(U) RDT&E,N</td> <td></td> <td></td> <td style="text-align: right;">0.119</td> <td style="text-align: right;">0.000</td> <td style="text-align: right;">0.000</td> <td style="text-align: right;">0.000</td> <td style="text-align: right;">0.000</td> <td style="text-align: right;">0.000</td> <td style="text-align: right;">Continuing</td> </tr> <tr> <td>(U) PMC, BLI# 462000 APSCE</td> <td></td> <td></td> <td style="text-align: right;">4.590</td> <td style="text-align: right;">0.000</td> <td style="text-align: right;">0.000</td> <td style="text-align: right;">0.000</td> <td style="text-align: right;">0.000</td> <td style="text-align: right;">0.000</td> <td style="text-align: right;">Continuing</td> </tr> </table>						Program Funding Summary	<u>FY 2000</u>	<u>FY 2001</u>	<u>FY 2002</u>	<u>FY 2003</u>	<u>FY 2004</u>	<u>FY 2005</u>	<u>FY 2006</u>	<u>FY 2007 To Compl</u>	<u>Total Cost</u>	(APPN, BLI #, NOMEN)										(U) RDT&E,N			0.119	0.000	0.000	0.000	0.000	0.000	Continuing	(U) PMC, BLI# 462000 APSCE			4.590	0.000	0.000	0.000	0.000	0.000	Continuing								
Program Funding Summary	<u>FY 2000</u>	<u>FY 2001</u>	<u>FY 2002</u>	<u>FY 2003</u>	<u>FY 2004</u>	<u>FY 2005</u>	<u>FY 2006</u>	<u>FY 2007 To Compl</u>	<u>Total Cost</u>																																												
(APPN, BLI #, NOMEN)																																																					
(U) RDT&E,N			0.119	0.000	0.000	0.000	0.000	0.000	Continuing																																												
(U) PMC, BLI# 462000 APSCE			4.590	0.000	0.000	0.000	0.000	0.000	Continuing																																												