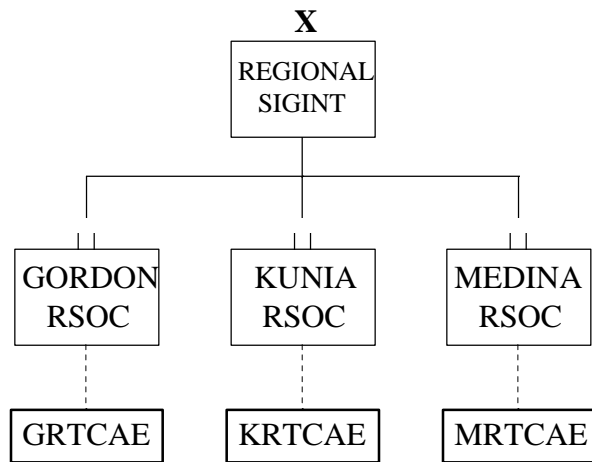


Chapter 7

Regional Signal Intelligence Operations Brigade

The Regional Signal Intelligence (SIGINT) Operations Brigade is a major subordinate command of INSCOM and consists of three SIGINT Battalions. The Brigade conducts Signals Intelligence (SIGINT) operations in support of the National Command Authority and is under the operational control of the National Security Agency. The brigade commander also serves as the commander of the Gordon Regional SIGINT Operations Center (GRSOC).

The Regional SIGINT Brigade is headquartered at Fort Gordon, Georgia. The brigades three battalions are located at Fort Gordon, Georgia, San Antonio, Texas, and Kunia, Hawaii. The battalions mission is to provide direct support to the National Security Agency (NSA) Deputy Director of Operations (DDO) in conduction Signals Intelligence operations within the Regional SIGINT Operations Centers. In addition, the battalions attempt to leverage the National Assets located at the RSOC's in support of the Land Component Commander supported by the individual RSOC.

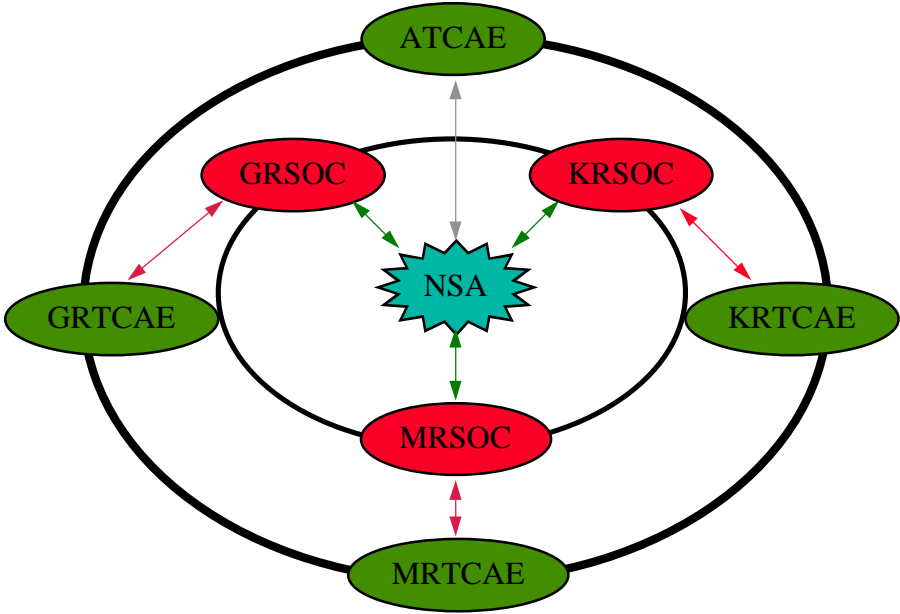


(Figure 7-1 BDE Organization)

The three Regional SIGINT Operations Centers (RSOC's) mission are based on a division of expertise, governed both by mission and geography. The Gordon RSOC's mission is designed to support both the ARCENT and USAEUR AOR's. The Medina RSOC's mission is designed to support both ARCENT and the Southern Command AOR's. The Kunia RSOC's mission is designed to support commanders requirements for the Pacific rim.

1
2
3
4
5
6
7

All of the RSOC's are joint operations manned with Consolidated Cryptologic Program (P3) personnel. Each of the RSOC's is the under the permanent command of one service. As stated above, the Gordon RSOC is under the command of an Army O-6. The Medina RSOC is commanded by an Air Force O-6, while the Kunia RSOC is under the command of a Navy O-6. The deputy commander as well as major staff elements of all three RSOC's rotates between the other services.



(Figure 7-2 SIGINT Relationships)

8
9

Regional TCAE Structure

10
11
12
13
14
15

The Regional TCAE provides technical SIGINT support and guidance to the Land Component Commander. The three Regional TCAE's are located at the Gordon RSOC (Fort Gordon, GA), Medina RSOC (San Antonio, TX), and Kunia RSOC (Kunia, Hawaii). Areas of responsibilities are divided by individual RSOC mission focus.

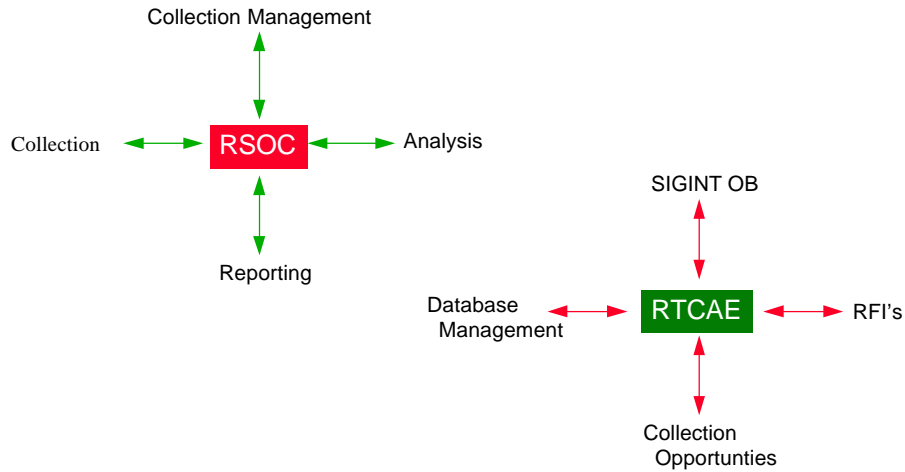
16
17
18
19

The Regional TCAE (RTCAE) is designed to enhance SIGINT coverage in support of the Warfighter through the leverage of national assets, focused analysis, and reporting. The RTCAE serves as the focal point for all coordination between the Regional SIGINT Operation Center and the ground SIGINT support force.

20
21
22
23
24
25

The RTCAE leverages and coordinates access to the RSOC's collection sources and data for the tactical SIGINT forces. It provides collection opportunities to ECB SIGINT assets while maintaining cognizance of both tactical and strategic collection postures. The RTCAE coordinates SIGINT specific training opportunities within the RSOC.

1 The RTCAE performs analysis and reporting for selected SIGINT targets. It provides
2 for indepth target analysis and development while maintaining specific SIGINT databases.
3 The RTCAE provides for SIGINT database validation and exchange with the tactical
4 SIGINT force.
5



(Figure 7-3 RSOC vs RTCAE)

6