

Chapter 6

Signals Intelligence Brigade

The Signals Intelligence (SIGINT) Brigade is a major subordinate command of INSCOM, and consists of a headquarters company, three battalions, a reserve augmentation detachment and an Individual Mobilization Augmentee (IMA) element. The Brigade conducts SIGINT operations in support of Army, ground component and joint warfighters, integrate reserve forces, and provides technically and tactically trained soldiers to support operations of the National Security Agency (NSA) and to execute operations to support land component commanders' information warfare and information operations.

The Signals Intelligence Brigade has three battalions and one Headquarters and Headquarters Company (HHC). The Brigade HHC's sole responsibility is to provide administration support to the Brigade Headquarters. The three battalions, Strategic Operations, Tactical Operations, and Space Operations Battalions, maintain headquarters operations primarily at Fort George G. Meade, Maryland. In addition, the Tactical Operations Battalion has a detachment located in Draper, Utah while the Space Operations has the majority of its companies and detachments spread throughout the Continental United States as well as overseas locations.

The Brigade's structure is based on a division of expertise, governed both by mission and geography. Personnel assigned to the Strategic Operations Battalion are generally employed within the NSA's Operations Directorate. The Tactical Operations Battalion operates the Army Technical Control and Analysis Element (TCAE) and integrates soldiers to individual NSA support groups. The Space Operations Battalion is focused on world wide SIGINT operations.

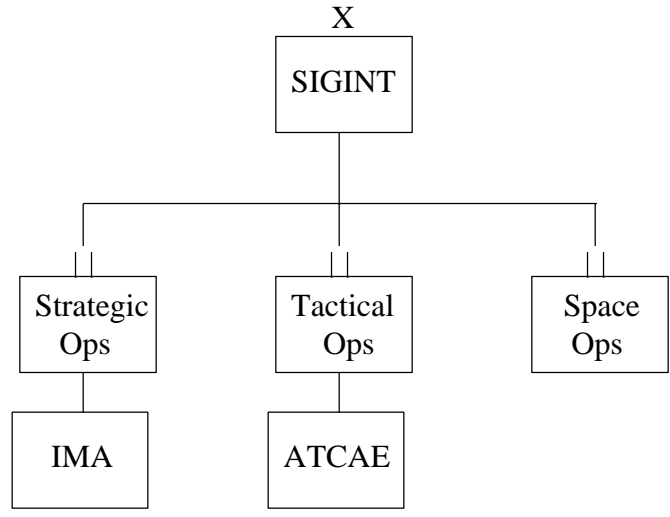
SIGINT Brigade Mission

The mission of the SIGINT Brigade is to support the Warfighters' and National Decision-makers' information superiority requirements through the conduct of SIGINT, Information Security (INFOSEC), Information and Command and Control Warfare (IW and C2W), both directly and through support to the NSA.

The Mission Essential Tasks List (METL) of the SIGINT Brigade are:

- o Conduct SIGINT and INFOSEC Operations
- o Leverage National Systems to Support Warfighters
- o Provide trained soldiers to support NSA operations, as well as various global contingencies

- 1 o Support Warfighters' and Policymakers' IW and C2W requirements
- 2
- 3 o Integrate the Reserve Component (RC) in peacetime, stability and security
- 4 operations, and wartime operations
- 5
- 6 o Sustain and maintain the force
- 7



(Figure 6-1 Signals Intelligence Brigade)

8
9 **Strategic Operations Battalion**

10
11 The Strategic Operations Battalion provides direct support to the NSA's Deputy
12 Director of Operations (DDO) in conducting SIGINT operations within NSA. The
13 Battalion, in coordination with NSA and the National Cryptologic School, insures soldiers
14 are technically proficient while insuring that soldiers are prepared for world-wide
15 deployment. The Battalion serves as the Brigade's Executive Agent (EA) for daily
16 operation of the Joint Language Center (JLC) and the Joint Learning Facility (JLF).

17
18 **Tactical Operations Battalion**

19
20 The Tactical Operations Battalion provides direct support to the Land Component
21 Commander (LCC) in conducting SIGINT within its individual area of responsibility
22 (AOR). This support is conducted through the Army TCAE located within NSA spaces.
23 In addition, the Tactical Operations Battalion supports selected NSA operations and
24 provides U.S. Title X oversight and support to the Utah National Guard (UTNG) SIGINT
25 operations.
26

1
2
3
4
5
6
7

The Space Operations Battalion conducts nonconventional SIGINT operations and leverages national systems in support of warfighters' and national decision-makers information superiority requirements. The battalion provides soldiers to Mission Ground Stations, to collection management sections in the National Security Agency and warfighter support sections to leverage national collection assets.

Warfighters	NCA/Services Intel Agencies	Acquisition Community
CINCS	White House	Planners
Corps	Congress	R&D
Division and below	Government Agencies	Weapon Developers
	Service Staffs	

(Figure 6-2 SIGINT Consumers)

Space Operations Battalion

8
9
10
11
12
13
14
15

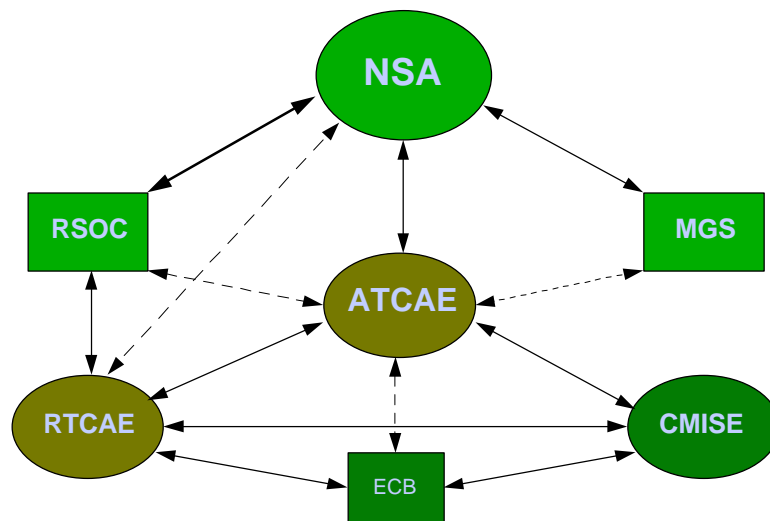
ARMY Tactical Control and Analysis Element (TCAE)

ARMY TCAE Mission

The ARMY TCAE is assigned to the Headquarters and Operations Company of the Tactical Operations Battalion. The ARMY TCAE provides the bridge between the Army's Ground SIGINT operations, EAC and below, and the National SIGINT operations at NSA and the Regional SIGINT Operations Centers. The ARMY TCAE is located within the NSA complex at Ft. Meade, Maryland, however personnel are not are

1 not assigned against NSA manning documents, and is the voice of the Army DCSINT on
2 all SIGINT matters involving Army Ground SIGINT elements.

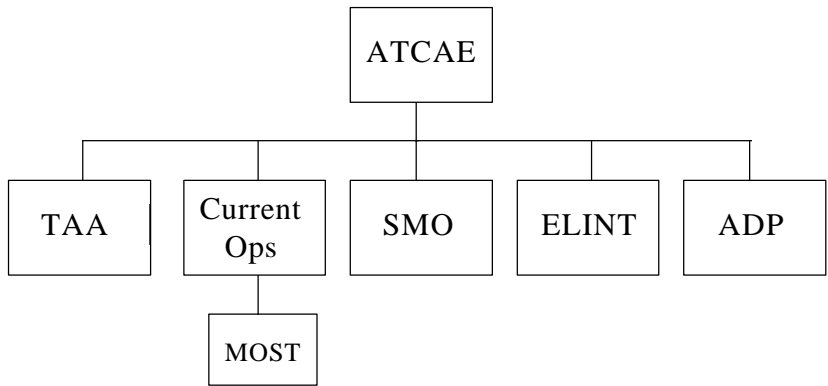
3
4 The ARMY TCAE have established both formal and informal relationships with both
5 Army and National SIGINT operations. Formal working relationships have been
6 established between NSA, the Regional TCAE's, and the CORPS MI Support Element
7 (CMISE) and the ARMY TCAE. Informal relationships exists with the Regional SIGINT
8 Operations Centers (RSOC), Mission Ground Stations (MGS), and SIGINT elements
9 located at Echelions Corps and Below (ECB).



(Figure 6-3 SIGINT Relationships)

10
11
12 The ARMY TCAE serves as the Army's link to integrated cryptology within joint military
13 operations. As such, the ARMY TCAE is the expert within the National SIGINT Brigade
14 in Land Operations. This requires the ARMY TCAE to retain a habitual relationship with
15 G2's at all echelons and to maintain a flexible surge capability.

16
17 Even though not an element of NSA, the ARMY TCAE is able to leverage NSA's
18 capabilities on behalf of the Ground Component Commander's SIGINT elements. When
19 Ground Component SIGINT units deploy during real-world operations, the ARMY
20 TCAE obtains the newest technology, processing power, and target knowledge from the
21 applicable NSA offices and provides it to the warfighter. Upon request, the ARMY TCAE
22 will provide SIGINT Support Teams (SST's) designed to bring current and timely
23 intelligence training directly to the warfighter's SIGINT element prior to deployment.



(Figure 6-4 Army TCAE Organization)

1
2
3
4
5
6
7
8
9

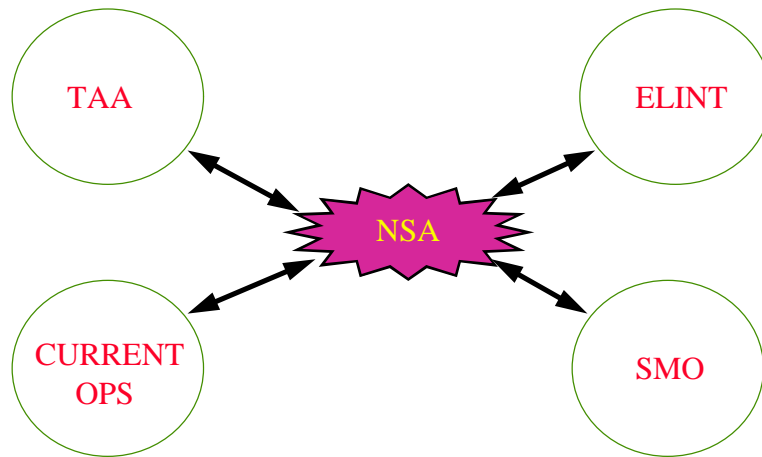
The ARMY TCAE is responsible for the National/Tactical integration at the NSA. ARMY TCAE personnel are integrated into key elements of NSA for the sole purpose of working Ground Component commander’s requirements with a specified Office of Primary Interest (OPI’s). The ARMY TCAE has also integrated into the operations at the various RSOCS, through the Regional TCAE, and has formed individual detachments at the individual Mission Ground Stations (MGS).



(Figure 6-5 National-Tactical Relationship)

10
11
12

1 The ARMY TCAE provides for a unique relationship between NSA and the Army.
2 The ARMY TCAE is collocated or fully integrated within selected NSA production
3 elements. These personnel are provided access to and works information that normally
4 falls below the NSA production threshold, but is of interest to the warfighter. The ARMY
5 TCAE provides the warfighter access to individual NSA databases by using existing NSA
6 secure communications in a near-real time. The Army receives support through the
7 ARMY TCAE by use of the TCAE/ACE architecture as described in USSID 1600. The
8 ARMY TCAE also provides direct support where no intermediate support exists as the



(Figure 6-5 TCAE Relationships)

9 situation dictates.

10

11 **ARMY TCAE Structure**

12

13 The ARMY TCAE is divided into six sections. These sections are the Technical
14 Analysis Activity (TAA), Current Operations, Operational Electronic Intelligence
15 (OPELINT), and Support to Military Operations (SMO) I, II, and III.

16

17 **Technical Analysis Activity (TAA)**

18

19 The Technical Analysis Activity provides offensive Information Warfare (IW)
20 technology development and conducts training, planning and execution of Information
21 Warfare operations for the warfighter.

22

23

24

25

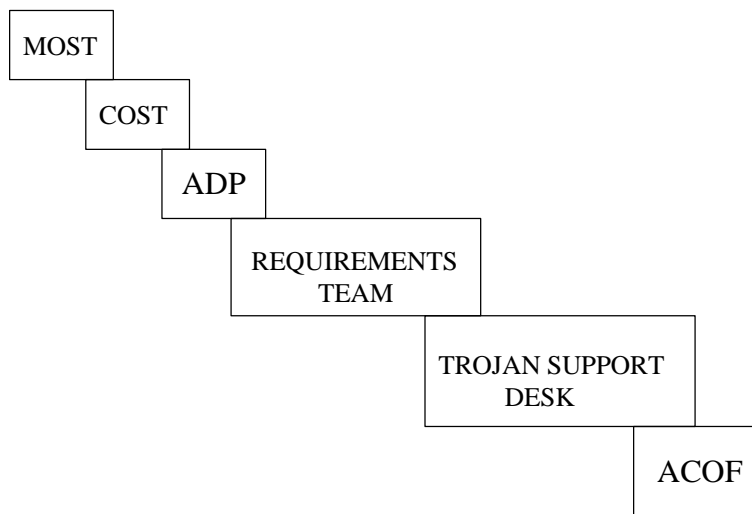
26

1 **Current Operations**

2

3 The Current Operations section of the ARMY TCAE consists of six individual teams.
4 These are the Military Operations Support Team (MOST), the Current Operations
5 Support Team (COST), the ADP team, the Requirements Team, and the TROJAN
6 Support Desk and ARMY TCAE Collection Operations Facility (ACOF). The Chief of
7 the Current Operations, and Army O-3, is located within the main office of the ARMY
8 TCAE within the NSA complex. The individual teams are colocated within various NSA
9 offices as well as in ARMY TCAE operational spaces.

Current Operations



10

11

(Figure 6-x ARMY TCAE Current Operations)

12

13

Military Operations Support Team (MOST)

14

15

When you absolutely, positively need support right away! Call MOST.

16

17

18

The Military Operations Support Team (MOST) staffs the ARMY TCAE National Security Operations Center (NSOC) desk, translates Joint Operations Planning and Execution System (JOPEs) orders into specific Land Component requirements for SIGINT support, and supports SIGINT operations of Joint Special Operations Forces and Marines.

21

22

23

24

25

26

The ARMY TCAE NSOC desk was established on 7 January 1991 in response to a need identified during Operation Desert Storm. The ARMY TCAE NSOC is a 24 hour operation staffed by senior analysts able to answer on the spot or respond in a short period to all SIGINT critical requests for information. The ARMY TCAE NSOC desk

1 has a formal working relationship with NSA and its Time Sensitive Operations and
2 Military Support and performs the following functions:

- 3
- 4 o Monitors all National Time Sensitive System (NTSS) reporting
- 5 o Provides Time-Sensitive information to tactical units in support of their
- 6 operations
- 7 o Identifies evolving situations requiring timely development of technical
- 8 materials
- 9 o Quality controls and enters TROJAN data transferred Klieglights into
- 10 the NTSS
- 11 o Coordinates ARMY TCAE actions with NSOC in support of units alerted
- 12 for deployment
- 13

14 **Current Operations Support Team (COST)**

15
16 The Current Operations Support Team (COST) is located in the administrative
17 spaces of the ARMY TCAE. The COST is responsible for the overall management of all
18 Request For Information (RFI). This function includes tracking of all incoming RFI's,
19 providing the individual request to the proper office within the ARMY TCAE, and
20 provides the formal response to the RFI originator. The COST maintains a close
21 relationship with the NSA Field Support Office and the National Cryptologic School to
22 provide timely support to the tactical Army in the forms of native language periodicals to
23 current course listings.

24 25 26 27 **Requirements Team**

28
29 The ARMY TCAE Requirements Team is colocated within the NSA office
30 responsible for Intercept Tasking Data Bases (ITDB) and United States Signal Intelligence
31 Directives (USSID). The Requirements Team is responsible to manage and maintain all of
32 the tactical Armys ITDB's to insure that they are current and reflect the individual units
33 SIGINT missions. In addition, the Requirements Team acts as the liaison between the
34 tactical SIGINT unit and NSA to insure that all of the units USSID holdings are current
35 and meet the needs based on the individual ITDB. The Requirements Team also assists
36 tactical Marine SIGINT units on both ITDB and USSID issues.

37 38 39 **TROJAN Support Team**

40
41 INSCOM HQ has tasked the ARMY TCAE TROJAN Support Team to
42 provide a 24 Hour help desk for all TROJAN Classic and Spirit issues. The TROJAN
43 Support Team acts as the honest broker to insure maximum utilization of TROJAN
44 Classic collection systems across the Army. To complete this, the TROJAN Support
45 Team works directly with Fort Belvoir TROJAN Switch, FORSCOM, and USAEUR on

1 all TROJAN management functions. The TROJAN Support Team provides the means to
2 track all TROJAN systems and SPIRIT's worldwide. The TROJAN Support Team
3 manages the ASAS-SS, JDISS, and TROJAN communications for the ARMY TCAE.

4 5 **ARMY TCAE Collection Operations Facility (ACOF)**

6
7 The ARMY TCAE Collection Operations Facility (ACOF) is a fully operational
8 TROJAN Classic activity. In addition, the ACOF serves as one test bed for the
9 ENHANCED TROJAN operations system. The mission of the ACOF is to serve as a
10 center for target development center for tactical SIGINT organizations

11 12 **ADP Team**

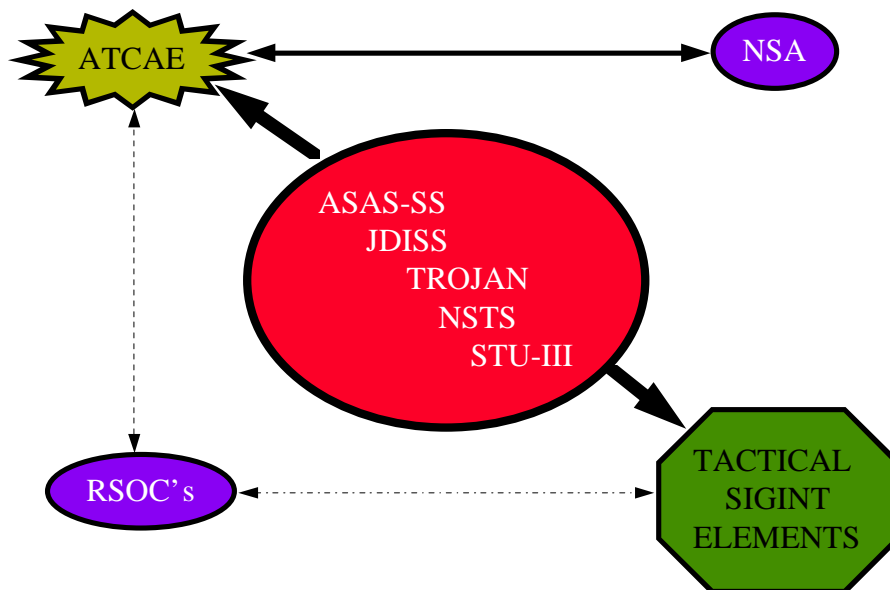
13
14 The ADP Team is responsible for the management of the ARMY TCAE
15 computer systems and LAN, working with NSA for interface with NSA LAN, and serves
16 as a center ASAS and JDISS interface into the NSA LAN.

17 18 **OPELINT Team**

19
20 The OPELINT Team is completely intergrated in NSA operations to provide
21 for access to the National Databases by tactical SIGINT units as well as providing tactical
22 expertise to the National mission.

23 24 **Support to Military Operations (SMO)**

25
26 Support to Military Operations (SMO) is divided into three sections and is designed to
27 mirror the Regional SIGINT Operations Centers. The SMO-I mission follows that of the
28 Median RSOC, SMO-II that of the Gordon RSOC, and SMO-III the Kunia RSOC. The
29 ARMY TCAE has integrated soldiers into various Office of Primary Interest's (OPI's) to
30 insure that the interest of the Land commander is understood and requirements are
31 answered. In addition, by placing individual soldiers within these various OPI's, tactical
32 Army SIGINT gains access to the most current National SIGINT databases.



(Figure 6-6 Communications)

ARMY TCAE Communications Structure

The ARMY TCAE maintains several means of communications that are monitored on a 24 hour a day basis. These systems run the gamut from secure (STU-III) and non-secure telephone to ASAS to formal electronic traffic. Communications with the ARMY TCAE can be made by using any one of the following:

- o ASAS-W
- o JDISS
- o STU-III
- o National Secure Telephone System (NSTS)
- o TROJAN secure telephone
- o FAX (secure and non-secure)
- o Electronic message traffic (R and Y Router)

SIGINT Brigade Core Competencies

The Signals Intelligence Brigade mission runs in a continuous cycle that includes elements preparing during peacetime while other elements are directly or indirectly support ongoing contingency operations. In that vain, the Brigade's core competencies remain flexible and expandable to meet the ever-changing face of the SIGINT battlefield. The basic Core Competencies of the Brigade include:

1 **SIGINT Expertise**

- 2
- 3 o Integrated Access into NSA Databases
 - 4
 - 5 o Language Expertise
 - 6
 - 7 o Signals Search and Analysis
 - 8
 - 9 o Advanced Technologic Skills
 - 10
 - 11 o Synergy with Information Warfare
 - 12

13

14 **Leverage National Systems**

- 15
- 16 o Army integration at Mission Ground Stations (MGS)
- 17
- 18 o Space Operations
- 19
- 20 o Provides Army Operations perspective
- 21
- 22 o Multi-Disciplined
- 23
- 24 o Forum for Follow-on Programs
- 25

26 **Force Projection**

- 27
- 28 o Broadcast Dissemination
- 29
- 30 o tactical tailoring
- 31
- 32 o split based operations
- 33

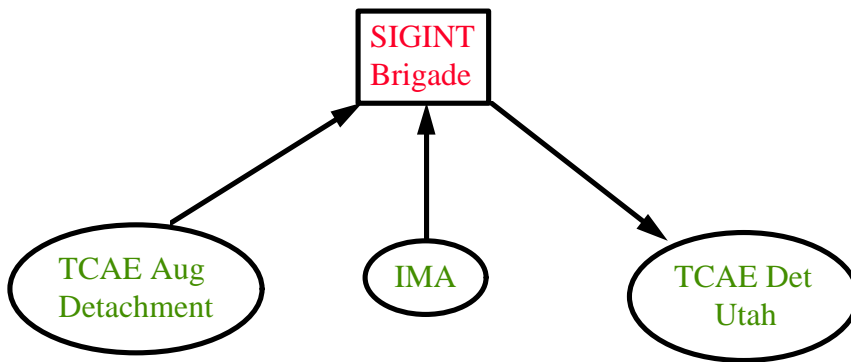
34 **Information Warfare**

- 35
- 36 o SIGINT support to IW
- 37
- 38 o Cadre of IW personnel
- 39
- 40 o Assist in development of IW weapons
- 41

42 **Training and Education**

- 43
- 44 o Soldiers Skills
- 45

- 1 o High Tech Skills
- 2
- 3 o Outreach Activities
- 4
- 5 o Primary source of National Systems expertise
- 6
- 7 o NSDP/NCS/JLC/JLF
- 8



(Figure 6-8 Reserve Intergration)

Reserve Integration

The SIGINT Brigade is deeply involved with the Reserve Component as well as performing Title X INTELL Oversight for the Utah National Guard.

1. The TCAE Augmentation Detachment provides a trained and ready reserve force to support the Army TCAE run by the Tactical Support Battalion. Detachment personnel have been integrated into both ARMY TCAE and NSA operations during its monthly drills.

2. The Individual Mobilization Augmentee (IMA) program is run directly form the Brigade Headquarters and provides individual augmentees to the Brigade’s subordinate units in support of the overall NSA mission.

1 3. The Brigade has a direct training association and has formed a wartime planning
2 association with the Utah National Guard. The Tactical Operational Battalion performs
3 Title X Intell Oversight for the Utah National Guard SIGINT operations. The Utah
4 National Guard provides linguistically trained personnel in support of the NSA mission.
5

6 **ARMY TCAE Detachment Utah**
7

8 The ARMY TCAE provides support the SIGINT operations and training for the 300th
9 MI Bde (NG) at Draper, UT. This support includes U.S. Title X oversight responsibility as
10 well as management of the TROJAN Training Facility. The 300th MI Bde has become a
11 vital source of language qualified soldiers during real world contingency operations. The
12 ARMY TCAE Det Utah provides support the 300th MI Bde to insure its soldiers are fully
13 trained and prepared for integration into the active force when called upon.
14