

LOC AKW 110.5	APCH CRS 285°	Rwy ldg 11,883 THRE 5872 Arpt Elev 5871
-------------------------	-------------------------	--

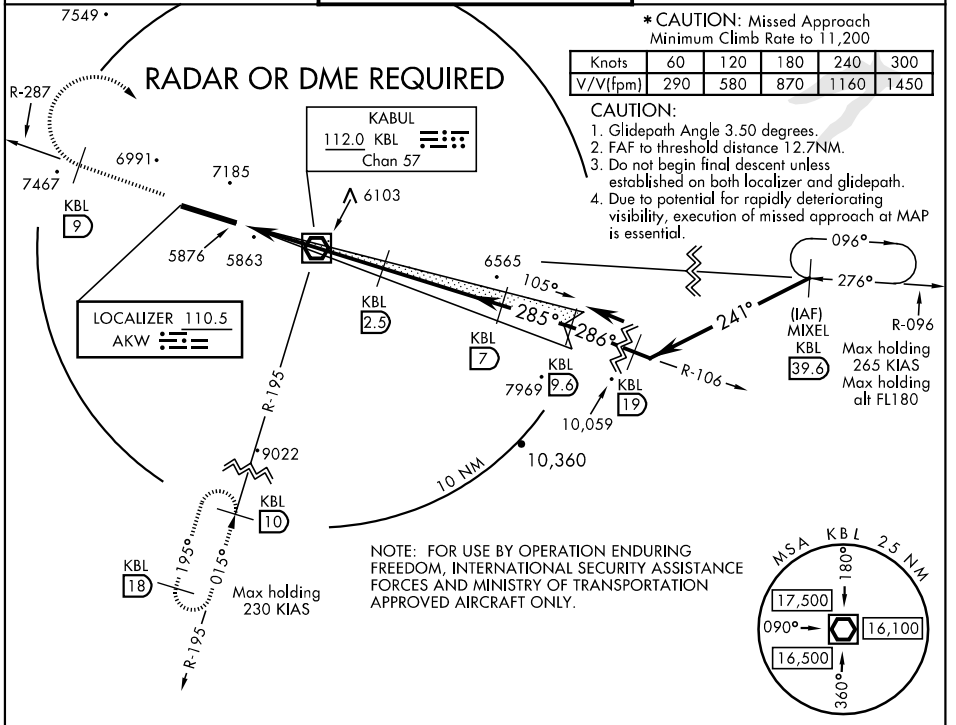
AL-1190 [USAF]

KABUL INTL (OAKB)

⚠ ** Circling not authorized S of Rwy 11-29.
Night operations are not authorized for RWY 11. (BF) ↑

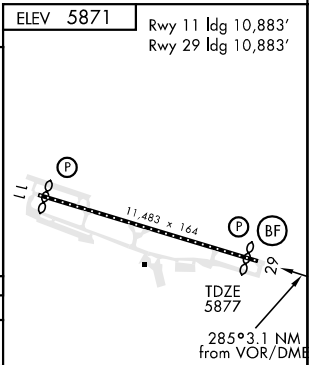
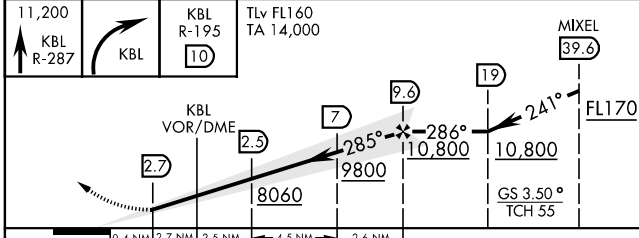
*** MISSED APPROACH:** Climb to 11,200 KBL R-287 to 9 DME, then turn right direct KBL VOR/DME, then proceed out the KBL R-195 to 10 DME and hold.

BAGRAM APP CON 133.35 379.3	KABUL TOWER 118.1 284.275	GND CON 120.32
---------------------------------------	-------------------------------------	--------------------------



EMERG SAFE ALT 100 NM 21,700

ELEV 5871 Rwy 11 ldg 10,883' Rwy 29 ldg 10,883'



CATEGORY	A	B	C	D
S-ILS 29	6350-2400m 473 (500-2400m)			
S-LOC 29	6540-1600m	663 (700-1600m)	6540-2800m 663 (700-2800m)	6540-3200m 663 (700-3200m)
CIRCLING **	7080-2000m 1203(1300-2000m)	7300-2400m 1423(1500-2400m)	7500-4800m	1623(1700-4800m)